

Stroke due to calcific embolus following coronary angiography

P.N. Sylaja, MD; and Michael D. Hill, MD

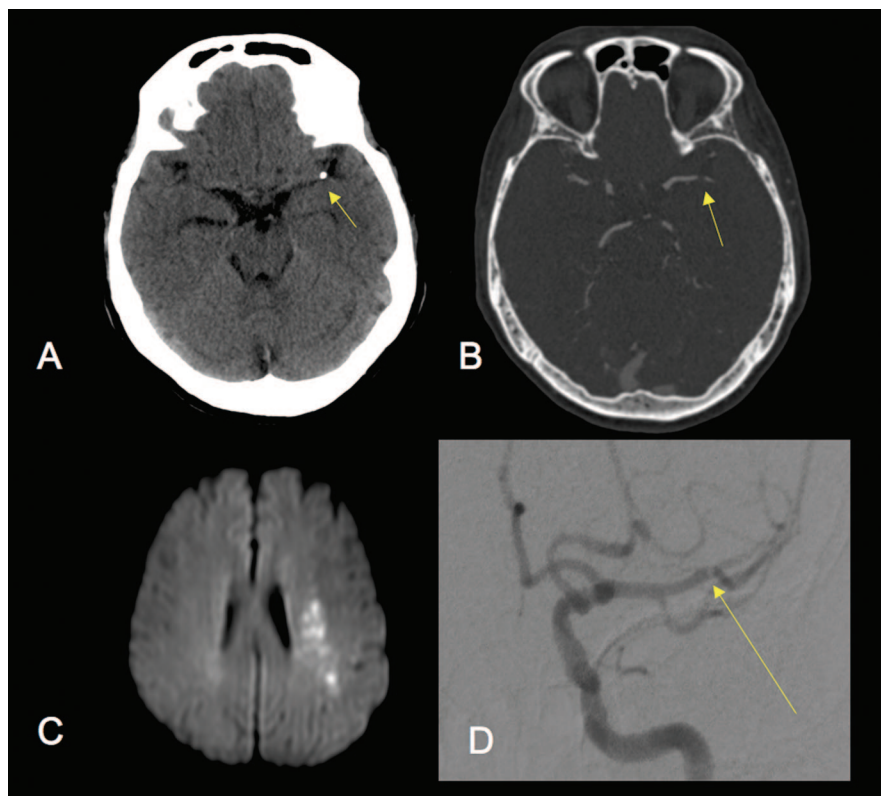


Figure. (A) Noncontrast CT scan of the head showing a calcified embolus within the left middle cerebral artery (MCA). (B) CT angiography showing the calcified embolus with poor distal flow. (C) Diffusion-weighted MRI shows the acute ischemic lesion in the left MCA territory. (D) Digital subtraction angiography showing the calcific embolus in the distal M1 with delayed filling in the superior division of MCA.

A 70-year-old right-handed, hypertensive woman underwent coronary angiography 5 days after a non-ST segment elevation myocardial infarction. Angiography showed a 90% narrowing of the left anterior descending artery. Toward the end of the procedure, she experienced fluctuating expressive dysphasia and mild right arm weakness. Head CT showed a calcific embolus in the left middle cerebral artery (figure, A, B). She stabilized with antiplatelet

therapy and IV heparin but worsened the following day with global aphasia and right hemiplegia (figure, C). Surgical and endovascular embolectomy was considered (figure, D), but she developed anterior wall myocardial infarction with left ventricular failure and was treated conservatively. With normal cardiac valves on echocardiography, the calcific embolus probably originated from aortic plaque. Although the incidence of this complication is unknown,

spontaneous embolization of calcific material commonly arises from calcific aortic or mitral valves.^{1,2}

References

1. Kirk GR, Johnson JK. Computed tomographic detection of a cerebral calcific embolus following coronary catheterization. *J Neuroimaging* 1994;4:241–242.
2. Halloran JI, Bekevac I. Unsuccessful tissue plasminogen activator treatment of acute stroke caused by a calcific embolus. *J Neuroimaging* 2004;14:385–387.

Disclosure: The authors report no conflicts of interest.

Address correspondence and reprint requests to Dr. Michael D. Hill, Calgary Stroke Program, Department of Clinical Neurosciences, Foot Hills Hospital, Room 1242A, Calgary, Alberta, Canada T2N 2T9; e-mail: michael.hill@calgaryhealthregion.ca

E16 Copyright © 2006 by AAN Enterprises, Inc.

Copyright © by AAN Enterprises, Inc. Unauthorized reproduction of this article is prohibited.

Neurology[®]

Stroke due to calcific embolus following coronary angiography

P. N. Sylaja and Michael D. Hill

Neurology 2006;67;E16

DOI 10.1212/01.wnl.0000242617.79359.d4

This information is current as of November 13, 2006

Updated Information & Services	including high resolution figures, can be found at: http://www.neurology.org/content/67/9/E16.full.html
References	This article cites 2 articles, 0 of which you can access for free at: http://www.neurology.org/content/67/9/E16.full.html#ref-list-1
Citations	This article has been cited by 1 HighWire-hosted articles: http://www.neurology.org/content/67/9/E16.full.html#otherarticles
Subspecialty Collections	This article, along with others on similar topics, appears in the following collection(s): All Cerebrovascular disease/Stroke http://www.neurology.org/cgi/collection/all_cerebrovascular_disease_stroke Cardiac http://www.neurology.org/cgi/collection/cardiac Infarction http://www.neurology.org/cgi/collection/infarction
Permissions & Licensing	Information about reproducing this article in parts (figures, tables) or in its entirety can be found online at: http://www.neurology.org/misc/about.xhtml#permissions
Reprints	Information about ordering reprints can be found online: http://www.neurology.org/misc/addir.xhtml#reprintsus

Neurology® is the official journal of the American Academy of Neurology. Published continuously since 1951, it is now a weekly with 48 issues per year. Copyright . All rights reserved. Print ISSN: 0028-3878. Online ISSN: 1526-632X.

