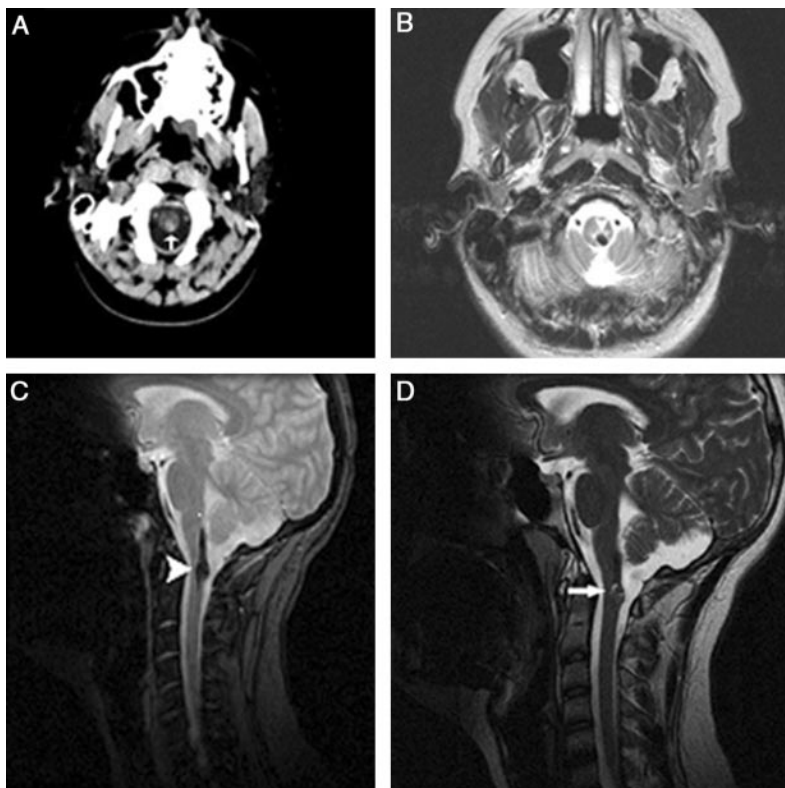


Hemipseudoathetosis due to a hemorrhage at the cervicomedullary junction



Figure CT scan and follow-up T2-weighted MRI



CT scanning revealed a hyperdense region at the cervicomedullary junction (A, vertical arrow) suggesting acute hemorrhage, confirmed by the corresponding hypointensity most pronounced on T2-weighted MRI (B). Follow-up T2-weighted MRI demonstrated hemosiderin deposition (gradient echo, C) and a “popcorn”-like structure (D).

A 17-year-old male presented with spontaneous left neck pain and ipsilateral involuntary arm movements. Examination revealed left facial hypoesthesia, right-sided pyramidal signs, and proprioceptive loss in the left arm with pseudoathetosis (video). Cervical-spinal imaging suggested acute hemorrhage at the cervicomedullary junction (figure, A and B). The patient improved over 3 months, and a follow-up MRI demonstrated hemosiderin deposition and a “popcorn” appearance confirming old intraparenchymal hemorrhage (figure, C and D).

The hemorrhage correlated anatomically with the left cuneate tract and nucleus. Coexisting signs implied involvement of the spinal tract and nucleus of the trigeminal nerve and the corticospinal tract predecussation. Pseudoathetosis indicates disruption of the proprioceptive pathway, from peripheral nerve to parietal cortex.¹ Spontaneous cervicomedullary hemorrhage results from bleeding diatheses, tumor, syrinx, or vascular malformation.²

Marc Gotkine, MBBS (Hons) John Moshe Gomori, MD, Jerusalem, Israel

Disclosure: The authors report no conflicts of interest.

Address correspondence and reprint requests to Dr. Marc Gotkine, Department of Neurology, Hadassah University Hospital, Hebrew University-Hadassah Medical School, Jerusalem, Israel; marc@gotkine.com

1. Ghika J, Bogousslavsky J. Spinal pseudoathetosis: a rare, forgotten syndrome, with a review of old and recent descriptions. *Neurology* 1997;49:432–437.
2. Pullarkat VA, Kalapura T, Pincus M, Baskharoun R. Intraspinial hemorrhage complicating oral anticoagulant therapy: an unusual case of cervical hematomyelia and a review of the literature. *Arch Intern Med* 2000;160:237–240.

Supplemental data at
www.neurology.org

Neurology[®]

Hemipseudoathetosis due to a hemorrhage at the cervicomedullary junction

Marc Gotkine and John Moshe Gomori

Neurology 2007;69;1551

DOI 10.1212/01.wnl.0000285506.04246.c2

This information is current as of October 8, 2007

Updated Information & Services	including high resolution figures, can be found at: http://www.neurology.org/content/69/15/1551.full.html
Supplementary Material	Supplementary material can be found at: http://www.neurology.org/content/suppl/2007/10/05/69.15.1551.DC1.html
References	This article cites 2 articles, 1 of which you can access for free at: http://www.neurology.org/content/69/15/1551.full.html##ref-list-1
Permissions & Licensing	Information about reproducing this article in parts (figures, tables) or in its entirety can be found online at: http://www.neurology.org/misc/about.xhtml#permissions
Reprints	Information about ordering reprints can be found online: http://www.neurology.org/misc/addir.xhtml#reprintsus

Neurology® is the official journal of the American Academy of Neurology. Published continuously since 1951, it is now a weekly with 48 issues per year. Copyright . All rights reserved. Print ISSN: 0028-3878. Online ISSN: 1526-632X.

