

Article

# Reading comprehension without phonological mediation: Further evidence from a Chinese aphasic individual

HAN ZaiZhu & Bi YanChao<sup>†</sup>

State Key Laboratory of Cognitive Neuroscience and Learning, Beijing Normal University, Beijing 100875, China

**An important issue in visual word comprehension literature is whether or not semantic access is mediated by phonological processing. In this paper, we present a Chinese individual, YGA, who provides converging evidence to directly address this issue. YGA has sustained damage to the left posterior superior and middle temporal lobe, and shows difficulty in orally name pictures and reading printed words aloud. He makes phonological errors on these tasks and also semantic errors on picture naming, indicating a deficit at accessing the phonological representations for output. However, he is intact at understanding the meaning of visually presented words. Such a profile challenges the hypothesis that semantic access in reading is phonologically mediated and provides further evidence for the universal principle of direct semantic access in reading.**

word reading, phonological mediation, Chinese, case study

## 1 Introduction

How readers access meaning from a visual word input is a central issue in word processing research. One of the debates has concerned whether or not this semantic access process is mediated by phonological access. The phonologically-mediated hypothesis assumes that a visual stimulus only accesses its meaning by firstly activating a phonological form which subsequently accesses the meaning<sup>[1-11]</sup>. An alternative hypothesis, the direct access hypothesis, assumes that the semantic representation is directly activated by orthographic encodes<sup>[12-15]</sup>.

The phonological mediation hypothesis was motivated and supported by a number of chronometric studies on normal subjects. The most important findings were reported by Lukatela and Turvey<sup>[3-6]</sup> and Van Orden et al.<sup>[8-11]</sup>. For example, in a semantic category task (e.g., Flower-is X a flower?), Van Orden et al.<sup>[8-9]</sup> found that the participants had more difficulty rejecting words and pseudo-words (e.g., “rows”) which are homophones of a “yes” response (“rose”) than control words (“robs”).

In a semantic priming study, Lukatela & Turvey<sup>[5-6]</sup> observed that the target words (e.g., “frog”) benefited equally from a semantic-related word (“toad”), a word that is homophonic to the semantic-related word (“towed”) and a pseudo-word that is homophonic to the semantic-related word (“tode”). The semantic priming effect produced by these homophone words was explained as followings: the visual input (e.g., “towed” or “tode”) accesses its phonological representation (/toud/), which is identical to the phonological representation of the semantic neighbor (“toad”) of the target; this phonological representation serves as an input to activate the corresponding semantic representations and therefore activates both “towed” and “toad” to the same degree, resulting in the priming of “frog”. In other words, the results are readily explained by the phonological-me-

Received September 2, 2008; accepted December 19, 2008

doi: 10.1007/s11427-009-0048-x

<sup>†</sup>Corresponding author (email: ybi@bnu.edu.cn)

Supported by Grants PCSIRT (IRT0710), National Natural Science Foundation of China (Grant Nos. 30770715, 30700224), Beijing Natural Science Foundation (Grant No. 7082051).

diation hypothesis of semantic access in visual word recognition.

Subsequent studies have challenged this hypothesis. For example, using a broader semantic category in the semantic judgment task (e.g., living thing?) than the ones used in Van Orden et al.'s experiments<sup>[8-9]</sup>, Jared and Seidenberg<sup>[16]</sup> failed to find the homophone semantic priming effect. Jared & Seidenberg reasoned that the homophone effect observed by Van Orden and colleagues was, at least in part, due to the subjects' strategic factors. In the experiments where narrow semantic categories were used, the phonological representation of their members might be pre-activated, and the phonological activation of homophonic words comes from the semantics system (the narrow semantic category) but not from the orthographic input, so successful reading comprehension is possible without phonological knowledge.

The most challenging evidence to the phonological-mediation semantic access hypothesis comes from the studies of brain-damaged individuals. The logic is straightforward. If phonological mediation is mandatory in the semantic access of visual word comprehension, it might be expected that impairment in retrieving the phonological representation might result in poor performance concerning word comprehension. Contrary to this prediction, some patients have demonstrated strong reading comprehension ability in spite of phonological output deficits<sup>[17-21]</sup>. For instance, EA<sup>[21]</sup> showed nearly intact ability in visual and auditory word comprehension, as revealed by strong performance on the tasks including lexical decision, written synonym matching, the Pyramids and Palm Trees Test<sup>[22]</sup>, and sentence-picture matching (90%–99%, correct). By contrast, he was severely impaired and made predominantly semantic errors in tasks involving phonological retrievals, e.g., oral picture naming, oral reading, and writing to dictation tasks (0%–48%). He was also not able to read nonwords or write to the dictation of nonwords (0%), indicating severe disruption of the nonlexical grapheme-phoneme conversion (GPC) procedure. EA's performance showed that written word recognition is possible without the generation of phonology, supporting the direct access hypothesis.

An important issue in understanding the lexical access processing in reading is whether the process is universal or language-specific. While the studies reviewed above were all conducted in alphabetic languages (e.g., English), other languages differ with regard to vis-

ual-sound and visual-meaning mappings. For instance, in Chinese, a typical logographic language, written characters have virtually no grapheme-phoneme-correspondence on a segmental level, yet often contain components which provide cues for the semantic properties. Therefore, it is of theoretical importance whether the phonological mediation plays a less crucial role in semantic access in written Chinese. Nevertheless, it has been repetitively observed in chronometric studies that there is early and automatic phonological activation in written Chinese word recognition tasks, and that the activated phonological information plays a critical mediating role in accessing meaning<sup>[23-28]</sup>. For instance, using a backward masking paradigm with Mandarin speakers, Tan and Perfetti<sup>[27]</sup> found that a homophone of a target's synonym facilitated target identification if the prime had few homophones but not when the prime had many homophones. The direct synonym of the target produced a greater priming effect than the homophone of the synonym in short SOA conditions (across 129 – 243 ms) and only the synonym priming effect persisted under the SOA 500 ms condition. These results, while compelling, were not replicated by subsequent studies<sup>[29-32]</sup>. In a recent study, Chen et al.<sup>[33]</sup> did not also observe the homophone-mediated semantic priming effect in the recognition task of Japanese Kanji, a logographic script.

Paralleling the aphasic study of alphabetic languages, Zhou et al.<sup>[34]</sup> reported a Chinese-speaking individual who speaks to the target issue, LY, who had relatively preserved visual word comprehension ability yet showed poor performance on oral production tasks where she mostly made phonological errors. The authors therefore argued that the profile of LY provided counter-evidence for the phonological-mediation semantic access hypothesis in Chinese. However, the data of that case was rather inclusive. First, LY's visual comprehension was indeed impaired, making errors with relatively easy word comprehension tasks (e.g., association decision for visually presented word pairs, 32/50; auditory word-picture matching, 14/17). She also presented deficits in the oral word repetition task (43/52). In this case, the pattern of LY's impairments seemed jumbled, and she might have been subject to multiple impairments. Therefore LY's data might be insufficient to challenge a phonologically mediated semantic access hypothesis.

In this paper, we present a Chinese case, YGA, who was studied in greater detail and indeed constitutes evi-

dence which directly addresses this issue. YGA showed a clear deficit in phonological retrieval tasks such as oral picture naming and oral word reading. Nevertheless, he was perfect at visual word comprehension and oral repetition tasks, suggesting the existence of a direct access route of semantic representation from visual input.

## 2 Case background

YGA is a 58-year-old, right-handed, Mandarin-speaking man with a middle school education. He had been the manager of an auto service company before he retired three years ago. Ten days before he was admitted to a hospital, he was suddenly not able to read the newspaper, and had occasional sharp pain on the top of left brain hemisphere. He had no dizziness or nausea. His family members reported that five days later he had some paraphrasias in speech, without symptoms of headache, nausea, limb paralysis, dysarthria or ataxia. A brain magnetic resonance imaging (MRI) scan on the day of hospitalization revealed that YGA had an infarct in the left posterior superior and middle temporal lobe (Figure 1). He was diagnosed with anomic aphasia according to the Chinese adaptation<sup>[35]</sup> of the Western Aphasia Battery<sup>[36]</sup>.

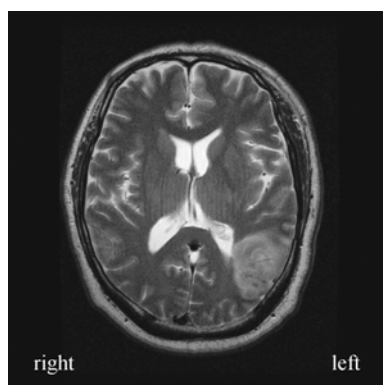


Figure 1 MRI scan of YGA

YGA's spontaneous speech was fragmented with word finding difficulties. He produced the following to describe the Cookie theft picture from the Boston Diagnostic Aphasia Examination<sup>[37]</sup>: "At home, children, his mother in, in kitchen, prepare, just that, wipe stuff, son and daughter go onto window, cabinet to take food. At home, at, there is big cabinet, small closet, that is about it. (Where is it?). /*chui2fang2*<sup>1</sup>/ (a nonword phonologi-

cally similar to kitchen, /*chu2fang2*/), room to make food stuff, wash clothes. (在家里头, 孩子他妈, 在, 在那个厨房, 准备, 就是那个, 擦东西, 儿子和闺女就去上窗, 柜子上拿吃的, 在屋里头, 在, 有大柜柜, 小柜橱, 差不多了. (问: 这发生在哪里?) *chui2* 房, 做吃的房间, 洗衣服的房间). We started testing him about one month post onset of his stroke using the BNU-CNLAB language screening battery (see Bi, Han, Shu, & Caramazza<sup>[38]</sup>). He had no errors on the Bucco-facial apraxia task (15/15 correct), and only one error in the oral repetition (39/40), had a mildly reduced auditory digital span (forward: 5, backward: 3). He showed intact auditory comprehension abilities (auditory lexical discrimination: 40/40; auditory lexical decision: 19/20; auditory word/picture matching: 50/50), and was also spared concerning visual comprehension tasks (visual word/picture matching: 50/50; visual sentence completion where he needed to choose one of four printed words to complete a visually presented sentence: 20/20). He had difficulty with oral picture naming (35/68) and oral word reading (47/57). He was poor at written picture naming (3/10) and writing to dictation (2/10), although he could perform direct-copying well (10/10). His main error types in oral picture naming were semantic substitutions (16/33, e.g., 拖鞋 (/tuoxie2/, slipper) → 脚 (/jiao3/, foot); 扫 (/sao3/, sweep) → 擦 (/ca1/, wipe) and phonological errors (13/33, e.g., /*shu4*/ (树, tree) → /*lu4*/; /*shui3bei1*/ (水杯, cup) → /*shui3pei1*/). Other errors included unrelated lexical errors (1/33, 跳绳 (/tiaosheng2/, rope skipping) → 相片 (/xiangpian1/, photo) and no responses (3/33). In word reading-aloud, all of his erroneous responses were phonologically related to the targets (8/10, e.g., 祝 (/zhu4/, wish) → /*chu4*/; 签 (/qian1/, signature) → /*jian1*/) except for the "don't know" response trials (2/10).

YGA's good performance on comprehension tasks in the screening test showed that his semantic knowledge was relatively spared. The prevalence of semantic and phonological errors in oral picture naming and word reading suggests that his deficit was due to the phonological (output) lexicon or the access to it. Critically, despite this impairment of accessing phonological lexical representations, his understanding of visual words

<sup>1</sup> The number denotes one of four tones in Chinese.

did not seem to be affected. However, one may argue that the picture-word matching task used in probing the comprehension abilities should have been relatively easier, as the subject could complete the task by either successfully identifying the target or rejecting the foil, and therefore the tasks were not sensitive enough to detect mild semantic impairment.

Hence, in experimental study, we investigated the reading comprehension and phonological access abilities of YGA using a much larger set of stimuli and more sensitive comprehension tasks.

### 3 Experimental study

To closely examine YGA's reading comprehension and phonological production ability we presented the following five tasks using the same stimuli set<sup>[39]</sup>: visual word/picture verification, auditory word/picture verification, oral picture naming, oral repetition, and oral word reading. In three experimental sections we studied these relevant functions by analyzing YGA's overall performances and the contributing variables. Note that a further set of stimuli was constructed for the reading task due to specific nature of the reading process (see 3.3).

#### 3.1 Experiment a: visual and auditory word comprehension

The two verification tasks were constructed using 162 pictures from the Chinese adaptation of the Snodgrass and Vanderwart set<sup>[40]</sup>. Each of the critical items (e.g., tiger) was presented in three separate blocks, once along with the target word (e.g., 虎 (/hu3/, tiger)), once with a semantically related word (豹 (/bao4/, leopard)) and once with a phonologically and/or orthographically related word (鼓 (/gu3/, drum)). The inclusion of these related foils ensures the sensitivity of the task in detecting mild semantic, phonological, or orthographic impairments in word comprehension. The three words associating with each picture were assigned into three blocks using the Latin-square design. In the visual word/picture verification the word was printed below the picture on the same sheet and in the auditory version the word was spoken by the experimenter. The subject needed to say "yes" or "no" whether the word matched the picture. An item was scored as correct only if he was correct in all three blocks, i.e., correctly accepting the target and rejecting the two foils. This task is found to be more sensitive to word-picture matching because here

the subjects cannot make correct decisions based solely on the knowledge of a foil<sup>[41]</sup>. Given that visual word comprehension is the focus here, we specifically compared YGA's visual word verification performance to the corresponding control data. The available control data (data unpublished) were based on the performance of 15 college students at Beijing Normal University (Mean age: 23).

The first complete responses of controls and YGA's were scored. YGA's correct percentages in all tasks are given in Figure 2. His performance on the two word-picture verification tasks had few errors. In the visual verification task, there was even a non-significant trend that YGA (96%) performed better than the controls (mean: 94%, range: 86%–98%) ( $P = 0.31$ ). The statistical program developed by Crawford & Garthwaite<sup>[42]</sup> was used here for this comparison. Therefore, YGA's semantic knowledge, at least for the concrete objects that we assessed, was preserved and the semantic access from visual input was spared.

#### 3.2 Experiment b: oral production I (oral picture naming and oral word repetition)

Both of the two oral production tasks used the stimuli of all 232 items from the Chinese adaptation of the Snodgrass and Vanderwart set<sup>[40]</sup>. YGA showed evident impairment in oral word picture naming (Figure 2). Given that he made no errors in oral repetition of the same items, his difficulties were not due to a peripheral oral production deficit. As shown in Table 1, in oral picture naming, he made semantic errors and phonological errors.

We carried out a multiple logistic regression analysis to elucidate the variables that influenced YGA's naming performances. The accuracy of the responses was treated as a dependent variable (1 for correct and 0 for incorrect). The independent variables included word length (number of syllables), name consistency, image consistency, familiarity, visual complexity<sup>[39]</sup>, and log frequency of words<sup>[43]</sup>. Using the "enter" method, we found that word frequency was the only significant predictor of his oral picture naming accuracy ( $P = 0.02$ ). This result further confirms our deduction that YGA was impaired at the stage of retrieving phonological (output) lexical representation for oral production. This is because, it is generally agreed that familiarity is a variable affecting semantic/conceptual representations and word frequency is a variable playing a role at the stage of lexical access<sup>[44–48]</sup>.

YGA's semantic errors in oral picture naming, despite having spared semantic knowledge, may be attributed to the deficit in accessing phonological output lexicon. As firstly articulated in Caramazza and Hillis<sup>[49]</sup>, semantic errors in production may either arise from the semantic level or from the lexical retrieval stage. This is because the semantic representation of a target during oral production activates a cohort of semantically related lexical nodes in phonological output lexicon. In a normal situation, the target phonological representation is most highly activated, reaching the selection threshold and is produced correctly. If the target lexical representation is not available due to brain damage, however, a semantic related word is then most likely to be selected, leading to the occurrence of semantic errors.

### 3.3 Experiment c: oral production II (reading words aloud)

Material Set 1: The same set of items used in Experiment b was presented to YGA and he was asked to read the words aloud. YGA had impairment of this task (Figure 2), although his performance was better than oral picture naming of the same items ( $\chi^2(1) = 51, P < 0.00001$ ). In oral reading, most of his errors were phonological (Table 1). We also conducted a similar multiple logistic regression analysis to understand the nature of his reading difficulty. The dependent variable was the reading accuracy of a particular item. The independent variables included word length, familiarity<sup>[39]</sup>, and log lexical frequency<sup>[43]</sup>. No variables were observed to significantly predict his reading accuracy ( $P > 0.25$ ).

The lack of lexical frequency effect in YGA's reading might be due to the existence of a reading pathway that bypasses the phonological lexicon. It is widely accepted that at least two routes underlie the reading aloud process – the semantic route and the nonlexical grapheme-phoneme conversion route<sup>[50,51]</sup>. In Chinese the nonlexical conversion process might be achieved by means of the phonetic radicals. A majority of Chinese characters are composed of a semantic radical that provides cues of meaning and a phonetic radical that gives cues of sound. In the case of so-called regular characters, where the phonetic radical is pronounced the same to the whole character, successful reading aloud of the whole characters may be deduced from the phonetic radical without the involvement of the target phonological lexical representation. Because the stimuli set we used contained a mixture of regular and irregular words, the effect of the lexical frequency of entire words might be

shadowed.

Material set 2: Given that the current issue is whether or not YGA is impaired with accessing the phonological (output) lexicon and at least partly underlies the reading-aloud difficulty, we designed a further set of stimuli that manipulated both the lexical frequency and the phonetic regularity of characters. A 2 (word frequency: high, low)  $\times$  2 (phonetic regularity: regular, irregular) design was used and forty items were selected for each cell. We observed that the reading of regular characters was not affected by frequency (34/40 vs. 30/40,  $\chi^2(1) < 1$ ), whereas concerning irregular characters, high frequency characters were read significantly more accurately than low frequency ones (35/40 vs. 23/40,  $\chi^2(1) < 9.03, P < 0.003$ ). Thus, the impairment in the phonological lexicon indeed played a role in YGA's reading impairment.

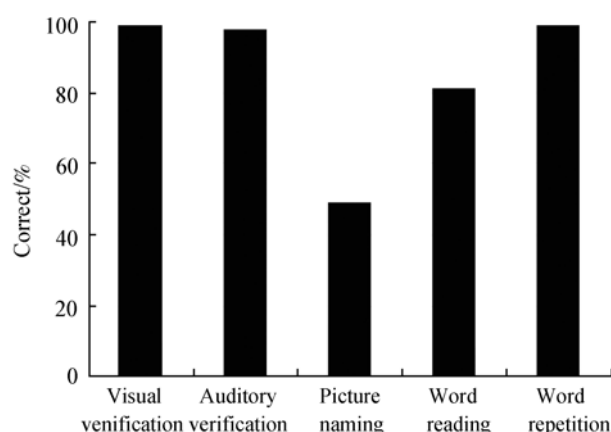


Figure 2 YGA's correct percentages across tasks in the Experiment

Table 1 The error distributions in YGA's picture naming and word reading performances (number of errors in parentheses)

Error type	Picture naming	Word reading
Semantic error	52% (62)	4% (2)
Phonological similar error	32% (38)	93% (42)
Visual similar error	2% (2)	0% (0)
Neologism	2% (2)	2% (1)
Unrelated errors	1% (1)	0% (0)
No response	12% (14)	0% (0)
Total	100% (119)	100% (45)

## 4 Discussion

We present a clear profile showing dissociation between visual word comprehension and visual word reading/oral production in a Chinese case. YGA performed normally in a variety of visual and auditory word comprehension

tasks, including word/picture matching, sentence/picture matching, sentence completion, and word/picture verification. Critically, in the visual verification task which has proven to be sensitive to the breakdown of the semantic system<sup>[41]</sup>, YGA's performance was even higher than the control subjects who were of a higher education level and younger age than him. However, he had difficulty reading aloud the same visual words which he had correctly comprehended. He also made semantic errors and phonological errors in oral picture naming for the same items. Furthermore, he presented a word frequency effect in these oral production tasks including picture naming and word reading aloud. Together these results demonstrated that YGA's deficit was localized to the access of the phonological output representation and/or the phonological representation itself.

YGA's error-free visual word comprehension ability despite his phonological output lexicon (or access to it) deficit challenges the phonological mediation semantic access hypothesis for reading. This hypothesis assumes that successful reading comprehension is mediated by phonological access and hence predicts that semantic access in reading will be compromised due to phonological processing deficit. The proponents of this theory might argue that YGA achieves an error-free performance task via partially preserved phonological representation, which was impaired in oral reading aloud and picture naming, yet preserved enough to sustain accurate semantic access. However, in our word comprehension test, foils were semantically or orthographically/phonologically related to the target. It is unlikely that the partial phonological knowledge would allow YGA to correctly refuse the foils in this task but lead to errors in production tasks.

YGA's performance is readily explained by the direct access hypothesis, which assumes that there is a direct connection from the orthographic input lexicon to the semantic system. If we assume that the brain-damage in YGA disrupted access to the phonological output lexicon and spared the direct pathway from the orthographic input lexicon to semantic representation, YGA's behavioral patterns may be accounted for (e.g., Coltheart et al., 1980<sup>[12]</sup>, 1997<sup>[13]</sup>; see also some connectionist theories

for a similar notion<sup>[52-54]</sup>).

In the following sections we discuss the implications of this conclusion in a more general framework of lexical access in reading firstly by addressing the following two aspects of YGA's performances. First, why did YGA show superior performance on oral reading over oral picture naming? If the phonological representation was impaired, why did not it affect oral reading and oral picture naming to the same degree? This discrepancy in the two tasks may be attributed to the classical dual route model of reading aloud<sup>[13]</sup>, which assumes a nonlexical grapheme-phoneme conversion route to generate phonology from visual input and a semantic route that goes through the semantic representation of words. The output of these two routes may also integrate with each other to optimize the production accuracy and to prevent semantic errors in reading aloud<sup>[50,51,55,56]</sup>. In oral picture naming, by contrast, the only processing pathway is the semantic route – activation from the semantic system activates corresponding the phonological representation and there is no additional compensation mechanisms available.

The other issue is why YGA was intact in auditory word comprehension and oral word repetition while he had difficulty in accessing the phonological output lexicon information, as shown by impaired performance in oral picture naming and reading aloud. The current consensus of the lexical system includes two functionally independent phonological lexicons: the phonological input lexicon and the phonological output lexicon, which are respectively involved in auditory comprehension and oral production<sup>[57]</sup>. A great number of cases have been reported of having selective impairment to one of these two lexicons with the other spared<sup>[17-21, 49, 58-61]</sup>. Oral repetition is accomplished by either retrieving the phonological output representation of the to-be-repeated words, or through a nonlexical route by converting phonemic input directly to phonemic output, bypassing the phonological output lexicon. Indeed, it is not uncommon for brain-damaged patients (e.g., patients with anomia) to be able to repeat words (and nonwords) normally in spite of several deficit concern-

<sup>2</sup> Another caveat is that the majority of the experimental stimuli in the present study are concrete nouns and one may argue that YGA's deficits are confined to concrete nouns, but not to other words including abstract nouns or verbs. We examined this possibility by asking YGA to read aloud a set of 99 monosyllabic words including 1/3 concrete nouns (e.g., 碗, bowl), 1/3 abstract nouns (e.g., 祸, disaster) and 1/3 abstract verbs (e.g., 借, borrow), which were matched on various linguistic variables such as word frequency, number of strokes, and phonetic regularity (see details in Bi, et al.<sup>[50]</sup>). YGA's reading accuracy on these tasks were 23/33, 28/33 and 25/33. There was no significant difference among the three types of words ( $\chi^2(2) = 2.15, P = 0.34$ ), suggesting that YGA's reading aloud was not affected by grammatical class.

ing phonological lexical processing<sup>[62]</sup>.

One caveat<sup>2</sup> to consider here is that we have granted that the phonological mediation semantic access hypothesis assumes that the phonological mediation happens by going through the phonological *output* lexicon because there is no phonological input available in the visual word stimulus, and it is the same phonological *output* lexicon which underlies the oral production processes such as picture naming and reading aloud. Nevertheless, as discussed earlier, it is a generally accepted view that the phonological *input* process and the phonological *output* process are functionally autonomous and are therefore independently damaged<sup>[17–21, 49, 58–61]</sup>. It has been posited that there is a direct connection from the orthographic input lexicon to the phonological input lexicon, and the phonological input lexicon may serve as a mediating component for semantic access<sup>[19]</sup>.

Such a theory would indeed accommodate our data because YGA had good performance on auditory word comprehension and lexical tasks showing that his phonological input lexicon was preserved and might mediate successful semantic access. However, the premise of the theory – the direct connection between the orthographic input lexicon and phonological input lexicon – is not intrinsic to the lexical representation framework and would require support from independent motivation and evidence.

In conclusion, the case presented here parallels those cases reported in alphabetic languages. They together support a universal principal that successful reading comprehension does not rely on phonological mediation, but rather is achieved through a direct connection between the orthographic input lexicon and semantic representations<sup>[21]</sup>.

- 1 Frost R. Toward a strong phonological theory of visual word recognition: True issues and false trails. *Psychol Bull*, 1998, 123: 71–99
- 2 Gough P B. One second of reading. In: Kavangh , J P, Mattingly I G. (Eds.). *Language by Eye by Ear*. Cambridge: MA: MIT Press, 1972
- 3 Lukatela G, Turvey M T. Phonological access of the lexicon: Evidence from associative priming with pseudohomophones. *J Exp Psychol: Learn*, 1991, 17: 951–966
- 4 Lukatela G, Turvey M T. Similar attentional, frequency, and associative effects for pseudohomophones and words. *J Exp Psychol: Human*, 1993, 19: 166–178
- 5 Lukatela G, Turvey M T. Visual lexical access is initially phonological: I. Evidence from associative priming by words, homophones, and pseudohomophones. *J Exp Psychol: Gen*. 1994, 123: 107–128
- 6 Lukatela G, Turvey M T. Visual lexical access is initially phonological: 2. Evidence from phonological priming by homophones and pseudohomophones. *J Exp Psychol: Gen*, 1994 , 123: 331–353
- 7 Rubenstein H, Lewis S S, Rubenstein M A. Evidence for phonemic recoding in visual word recognition. *J Verbal Learn Verbal Behav*, 1971, 10: 645–657
- 8 Van Orden G C. A rows is a rose: spelling, sound, and reading. *Mem Cogniti*, 1987, 15: 181–198
- 9 Van Orden G C. Phonologic mediation in fundamental to reading. In Besner D, Humphreys G W. (Eds.). *Basic processes in reading: Visual word recognition*. New York: Lawrence Earlbaum, 1991. 77–103
- 10 Van Orden G C, Johnston J C, Hale B L. Word identification in reading proceeds from spelling to sound to meaning. *J Exp Psychol: Learn*, 1988, 14: 371–386
- 11 Van Orden G C, Pennington B F, Stone G O. Word identification in reading and the promise of subsymbolic psycholinguistics. *Psychol Rev*, 1990, 97: 488–522
- 12 Coltheart M. Reading, phonological recoding and deep dyslexia. In Coltheart M, Patterson K E, Marshall J. (eds), *Deep Dyslexia*. London: Routledge & Kegan Paul, 1980. 197–226
- 13 Coltheart M, Coltheart V. Reading comprehension is not exclusively reliant upon phonological representation. *Cogn Neuropsychol*. 1997, 14: 167–175
- 14 Johnson N F. On the function of letters in word identification: Some data and a preliminary model. *J Verbal Learn Verbal Behav*, 1975, 14: 17–29
- 15 Smith F. *Understanding reading: A psycholinguistic analysis of reading and learning to read*. NewYork: Holt, Rinehart & Winston, 1971
- 16 Jared D, Seidenberg M S. Does word identification proceed from spelling to sound to meaning? *J Exp Psychol Gen*, 1991, 120: 358–394
- 17 Caramazza A, Berndt R S, Basili A G. The selective impairment of phonological processing: A case study. *Brain and Language*, 1983, 18: 128–174
- 18 Ellis A W, Miller D, Sin G. Wernicke’s aphasia and normal language processing: A case study in cognitive neuropsychology. *Cognition*, 1983, 15: 111–144
- 19 Hanley J R, McDonnell V. Are reading and spelling phonologically mediated? Evidence from a patient with a speech production impairment. *Cogn Neuropsychol*, 1997, 14: 3–33
- 20 Patterson K E. The relation between reading and phonological coding: Further neuropsychological observations. In Ellis A W. (Ed.), *Normality and pathology in cognitive function*. London: Academic Press, 1982
- 21 Shelton J R, Weinrich M. Further evidence of a dissociation between phonological and orthographic output lexicons: A case study. *Cogn Neuropsychol*, 1997, 14: 105–129
- 22 Howard D, Patterson K E. *The Pyramids and Palm Test*. Themes Valley Test Company, Bury St Edmunds, 1992
- 23 Perfetti C A, Liu Y, Tan L H. The lexical constituency model: Some

- implications of research on Chinese for general theories of reading. *Psychol Rev*, 2005, 112: 43—59
- 24 Perfetti C A, Tan L H. The time-course of graphic, phonological, and semantic activation in Chinese character identification. *J Exp Psychol: Learn*, 1998, 24: 101—118
- 25 Perfetti C A, Zhang S. Phonological processes in reading Chinese characters. *J Exp Psychol: Learn*, 1991, 17: 633—643
- 26 Spinks J A, Liu Y, Perfetti C A, et al. Reading Chinese characters for meaning: The role of phonological information. *Cognition*, 2000, 76: B1—11
- 27 Tan L H, Perfetti C A. Visual Chinese character recognition: does phonological information mediate access to meaning? *J Mem Lang*, 1997, 37: 41—57
- 28 Tan L H, Perfetti C A. Phonological codes as early sources of constraint in Chinese word identification: A review of current discoveries and theoretical accounts. *Reading Writing*, 1998, 10: 165—200
- 29 Chen H C, Shu H. Lexical activation during recognition of Chinese characters: Evidence against early phonological activation. *Psychon Bull Rev*, 2001, 8: 511—518
- 30 Wu J T, Chen H C. Evaluating semantic priming and homophonic priming in recognition and naming of Chinese characters. *Chinese J Psychol*, 2000, 42: 65—86
- 31 Zhou X, Marslen-Wilson W. Direct visual access is the only way to access the Chinese mental lexicon. In Cottrell G. (Ed.). *Proceedings of the 18th Annual Conference of the Cognitive Science Society NJ: Erlbaum*, 1996. 714—719
- 32 Zhou X, Marslen-Wilson W. Phonology, orthography, and semantic activation in reading Chinese. *J Mem Lang*, 1999, 39: 579—606
- 33 Chen H C, Yamauchi T, Tamaoka K, et al. Homophonic and semantic priming of Japanese kanji words: A time course study. *Psychon Bull Rev*, 2007, 14: 64—69
- 34 Zhou X, Bai X, Shu H, et al. Non-semantic anomia: A case study of a Chinese patient. *Psychol Sci*, 1999, 4: 289—292 (in Chinese)
- 35 Gao S, Wang Y, Shi S, et al. *Aphasia*. Beijing: the Union Press of Beijing Medical University - the Beijing Union Medical College, 1993
- 36 Kertesz A. *Western aphasia battery*. San Antonio, TX: Psychological Corp, 1982
- 37 Goodglass H, Kaplan E. *The assessment of aphasia and related disorders*. Philadelphia: Lea & Febiger, 1972
- 38 Bi Y, Han Z, Shu H, et al. A. Nouns, verbs, objects, actions, and the animate/inanimate effect. *Cogn Neuropsychol*, 2007, 24: 485—504
- 39 Shu H, Cheng Y, Zhang H. Name agreement, familiarity, image agreement, and visual complexity for 235 pictures. *Acta Psychol Sinica*, 1989, 21: 389—396 (in Chinese)
- 40 Snodgrass J G, Vanderwart M. A standardized set of 260 pictures: Norms of name agreement, image agreement, familiarity, and visual complexity. *J Exp Psychol: Hum Learn*, 1980, 6: 174—215
- 41 Breese E L, Hillis A E. Auditory comprehension: Is multiple choice really good enough? *Brain Lang*, 2004, 89: 3—8
- 42 Crawford J R, Garthwaite P H. Comparison of a single case to a control or normative sample in neuropsychology: Development of a Bayesian approach. *Cogn Neuropsychol*, 2007, 24: 343—372
- 43 Xiandai Hanyu Pinlu Cidian (Frequency dictionary of modern Chinese). Beijing: Beijing Language Institute Press Christopher Hogan, 1986. (in Chinese)
- 44 Howard D, Gatehouse C. Distinguishing semantic and lexical word retrieval deficits in people with aphasia. *Aphasiology*, 2006, 20: 921—950
- 45 Jescheniak J D, Levelt W J M. Word frequency effects in speech production: Retrieval of syntactic information and of phonological form. *J Exp Psychol: Learn*, 1994, 20: 824—843
- 46 Levelt W J M, Roelofs A, Meyer A S. A theory of lexical access in speech production. *Behav Brain Sci*, 1999, 22: 1—75
- 47 Wingfield A. Perceptual and response hierarchies in object identification. *Acta Psychologica*, 1967, 26: 216—226
- 48 Wingfield A. Effects of frequency on identification and naming of objects. *Am J Psychol*, 1968, 18: 226—234
- 49 Caramazza A, Hillis A E. Where do semantic errors come from? *Cortex*, 1990, 26: 95—122
- 50 Bi Y, Han Z, Weekes B, et al., The interaction between semantic and the non-semantic systems in reading: Evidence from Chinese. *Neuropsychologia*, 2007, 45: 2660—2673
- 51 Han Z Z, Bi Y C, Shu H, et al., The interaction between semantic and sublexical routes in reading: Converging evidence from Chinese. *Brain Lang*, 2005, 95: 235—236
- 52 Harm M W, Seidenberg M S. Computing the meanings of words in reading: Cooperative division of labor between visual and phonological processes. *Psychol Rev*, 2004, 111(3): 662—720
- 53 Seidenberg M S. Visual word recognition: An overview. In Eimas P, Miller J L. (Eds.). *Handbook of perception and cognition: Language*. New York: Academic Press, 1995
- 54 Seidenberg M S, Petersen A, MacDonald M C, et al. Pseudohomophone effects and models of word recognition. *J Exp Psychol: Learn*, 1996, 22: 48—62
- 55 Hillis A E, Caramazza A. Mechanisms for accessing lexical representations for output: Evidence from a category-specific semantic deficit. *Brain Lang*, 1991, 40: 106—144
- 56 Hillis A E, Caramazza A. Converging evidence for the interaction of semantic and sublexical phonological information in accessing lexical representations for spoken output. *Cogn Neuropsychol*, 1995, 12: 187—227
- 57 Shelton J R, Caramazza A. Deficits in lexical and semantic processing: Implications for models of normal language. *Psychon Bull Rev*, 1999, 16: 5—27
- 58 Auerbach S H, Allard T, Naeser M, et al. Pure word deafness: Analysis of a case with bilateral lesions and a defect at the prephonemic level. *Brain*, 1982, 105: 271—300
- 59 Caramazza A, Hillis A E. Lexical organization of nouns and verbs in the brain. *Nature*, 1991, 349: 788—790
- 60 Franklin S, Turner J, Lambon R M A, et al. A distinctive case of word meaning deafness? *Cogn Neuropsychol*, 1996, 13: 1139—1162
- 61 Gazzaniga M S, Glass A A, Sarno M T, et al. Pure word deafness and hemispheric dynamics: A case history. *Cortex*, 1973, 9: 136—143
- 62 Bi Y, Han Z, Shu H. Compound frequency effect in word production: Evidence from anomia. *Brain Lang*, 130: 55—56