

## Neurocase: The Neural Basis of Cognition

Publication details, including instructions for authors and subscription information:

<http://www.tandfonline.com/loi/nncs20>

### Hyperlexia and ambient echolalia in a case of cerebral infarction of the left anterior cingulate cortex and corpus callosum

Tadashi Suzuki <sup>a</sup>, Shouichi Itoh <sup>b</sup>, Mototaka Hayashi <sup>b</sup>, Masako Kouno <sup>a</sup> & Katsuhiko Takeda <sup>c</sup>

<sup>a</sup> Department of Rehabilitation Medicine, Tokyo Teishin Hospital, Tokyo, Japan

<sup>b</sup> Department of Neurosurgery, Tokyo Teishin Hospital, Tokyo, Japan

<sup>c</sup> Department of Neurology, Mita Hospital International University of Health and Welfare, Tokyo, Japan

Published online: 16 Sep 2009.

To cite this article: Tadashi Suzuki, Shouichi Itoh, Mototaka Hayashi, Masako Kouno & Katsuhiko Takeda (2009): Hyperlexia and ambient echolalia in a case of cerebral infarction of the left anterior cingulate cortex and corpus callosum, *Neurocase: The Neural Basis of Cognition*, 15:5, 384-389

To link to this article: <http://dx.doi.org/10.1080/13554790902842037>

PLEASE SCROLL DOWN FOR ARTICLE

Full terms and conditions of use: <http://www.tandfonline.com/page/terms-and-conditions>

This article may be used for research, teaching, and private study purposes. Any substantial or systematic reproduction, redistribution, reselling, loan, sub-licensing, systematic supply, or distribution in any form to anyone is expressly forbidden.

The publisher does not give any warranty express or implied or make any representation that the contents will be complete or accurate or up to date. The accuracy of any instructions, formulae, and drug doses should be independently verified with primary sources. The publisher shall not be liable for any loss, actions, claims, proceedings, demand, or costs or damages whatsoever or howsoever caused arising directly or indirectly in connection with or arising out of the use of this material.

# Hyperlexia and ambient echolalia in a case of cerebral infarction of the left anterior cingulate cortex and corpus callosum

Tadashi Suzuki,<sup>1</sup> Shouichi Itoh,<sup>2</sup> Mototaka Hayashi,<sup>2</sup> Masako Kouno,<sup>1</sup> and Katsuhiko Takeda<sup>3</sup>

<sup>1</sup>Department of Rehabilitation Medicine, Tokyo Teishin Hospital, Tokyo, Japan

<sup>2</sup>Department of Neurosurgery, Tokyo Teishin Hospital, Tokyo, Japan

<sup>3</sup>Department of Neurology, Mita Hospital International University of Health and Welfare, Tokyo, Japan

We report the case of a 69-year-old woman with cerebral infarction in the left anterior cingulate cortex and corpus callosum. She showed hyperlexia, which was a distinctive reading phenomenon, as well as ambient echolalia. Clinical features also included complex disorders such as visual groping, compulsive manipulation of tools, and callosal disconnection syndrome. She read words written on the cover of a book and repeated words emanating from unrelated conversations around her or from hospital announcements. The combination of these two features due to a focal lesion has never been reported previously. The supplementary motor area may control the execution of established subroutines according to external and internal inputs. Hyperlexia as well as the compulsive manipulation of tools could be interpreted as faulty inhibition of preexisting essentially intact motor subroutines by damage to the anterior cingulate cortex reciprocally interconnected with the supplementary motor area.

**Keywords:** Hyperlexia; Ambient echolalia; Anterior cingulate cortex; Corpus callosum; Cerebral infarction.

## INTRODUCTION

The term hyperlexia was first defined and used in the early research of Silberberg and Silberberg (1967) to describe children with highly developed word recognition skills but little or no comprehension of the words recognized. It was defined as an isolated ability in reading words within a context of severe language delays, inappropriate or absent interpersonal relations, and behavioral fragmentation (Goldberg, 1987). Case studies reported hyperlexia to be more prevalent in children with pervasive development disorders including autism

(Elliot & Needleman, 1976; Goldberg & Rothermel, 1984; Huttenlocker & Huttenlocker, 1973; Mehegan & Dreifuss, 1972). There are only a few reports about 'acquired' hyperlexia (Assal, 1985; Furumoto, Matsuda, & Yoshiyama, 1996; Hadano, Sakata, Tanaka, Hamanaka, & Toda, 1987; Suzuki et al., 2000; Vuilleumier, Staub, & Assal, 1997), some of which are related to diffuse brain dysfunction (Hadano et al., 1987; Vuilleumier et al., 1997) or bilateral brain lesion (Assal, 1985). No case of 'acquired' hyperlexia has been reported to be related to a focal unilateral region of infarction.

We thank Yukari Sakuma, an occupational therapist, and Sachiko Fujikawa, a speech therapist, for their help in performing the neuropsychological tests, and Dr. Masami Takatsu and Professor Dr. Masahiro Abo for their valuable advice.

Address correspondence to Tadashi Suzuki MD, PhD, Department of Rehabilitation Medicine, Tokyo Teishin Hospital, 2-14-23 Fujimi, Chiyoda-ku, Tokyo, 102-8798, Japan. (E-mail: t.suzuki@tth-japanpost.jp).

Fisher (1988) introduced another phenomenon known as 'ambient echolalia', in which demented patients borrow words or phrases emanating from unrelated conversations around them or from a TV program. He explained that incoming words might automatically drive the speech apparatus in mentally deteriorated patients. Ambient echolalia has been reported only rarely (Della Sala & Spinnler, 1998; Endo et al., 2001; Fisher, 1988; Hadano et al., 1987), and this phenomenon with hyperlexia due to a focal lesion has never been reported.

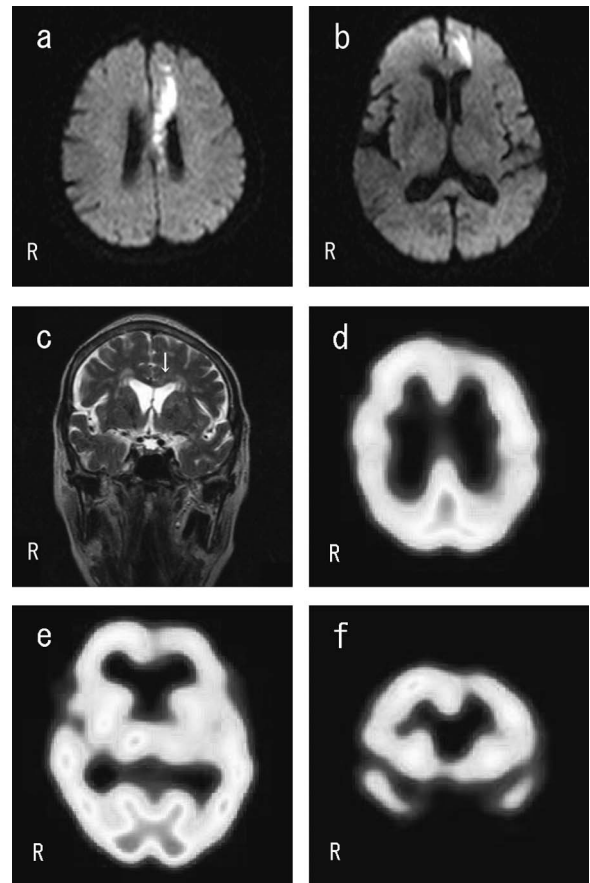
We report here a patient with a cerebral infarction in the left anterior cingulate cortex and corpus callosum, who read words present in front of her and also repeated words emanating from unrelated conversations around her.

### CASE REPORT

A 69-year-old right-handed Japanese woman with grade 9 education working at the front desk of a public bathhouse was admitted with numbness in her right arm and leg and some difficulty in walking. She had a past history of hypertension and diabetes. She was alert and fully oriented. She had no diminished spontaneous speech and her speech comprehension was good. The degree of right hemiparesis was slight and it improved within 2 weeks. In addition to visual groping (Seyffarth & Denny-Brown, 1948), compulsive manipulation of tools (Mori & Yamadori, 1982) was noted in her right hand. Recognizing these tendencies, she tended to restrain the movement of the right arm by holding it with the left arm. Ideomotor apraxia and agraphia were noted in her left hand which indicated callosal disconnection syndrome.

Brain magnetic resonance imaging (MRI) conducted on the day following the onset revealed the presence of an acute infarct in the left anterior cingulate cortex and the left trunk of the corpus callosum with some involvement of the subcortical superior frontal gyrus (Figure 1a–c). A technetium-99m-ethyl cysteinate dimer (99mTc-ECD) single-photon emission computed tomography (SPECT) conducted 1 month after the onset demonstrated a decrease in regional cerebral blood flow (rCBF) in the left frontal region in accordance with the MRI findings (Figure 1d–f).

A neuropsychological evaluation (Table 1) revealed neither aphasia nor dementia to be present. She scored 24 points on the Japanese Mini-Mental State Examination (MMSE) (Mori,



**Figure 1.** (a, b) Diffusion-weighted axial section magnetic resonance imaging (MRI) scan demonstrating a circumscribed lesion localized to the left anterior cingulate cortex with some involvement of the subcortical superior frontal gyrus. (c) T2-weighted coronal section MRI scan demonstrating a hyperintense lesion in the left trunk of the corpus callosum (arrow). (d, e, f) Technetium-99m-ethyl cysteinate dimer (99mTc-ECD) single-photon emission computed tomography (SPECT) showing perfusion defects in accordance with MRI findings.

Mitani, & Yamadori, 1985), which indicated no cognitive impairment. Her verbal and performance intelligence quotient (IQ) based on the Japanese Wechsler Adult Intelligence Scale-Revised (WAIS-R) (Shinagawa, Kobayashi, Fujita, & Maekawa, 1990) were in the low average range: 89 and 82, respectively. She did particularly poor regarding digit span, object assembly, and digit symbol. She performed within one standard deviation of the mean on all items excluding word fluency in the Standard Language Test for Aphasia (SLTA) (Nirayama Conference, 1975). On Japanese Wechsler Memory Scale-Revised (WMS-R) (Sugishita, 2001), she obtained scores of 93 and 62 for the verbal and visual memory, respectively,

**TABLE 1**  
Neuropsychological profile

<i>Neuropsychological test</i>	<i>Performance</i>	<i>Percentile/range</i>
MMSE (Japanese)	24 <sup>a</sup>	No cognitive impairment
WAIS-R (Japanese)		
Information	8 <sup>b</sup>	25th percentile
Digit span	6	9th percentile
Vocabulary	8	25th percentile
Arithmetic	8	25th percentile
Comprehension	9	37th percentile
Similarities	11	63rd percentile
Picture completion	10	50th percentile
Picture arrangement	7	16th percentile
Block design	9	37th percentile
Object assembly	4	2nd percentile
Digit symbol	6	9th percentile
Verbal IQ	89	Low average
Performance IQ	82	Low average
Full-scale IQ	85	Low average
WMS-R (Japanese)		
General memory	80 <sup>c</sup>	9th percentile
Verbal memory	93	>25th percentile <37th percentile
Visual memory	62	<1st percentile
Attention and concentration	65	1st percentile
Delayed recall	91	>25th percentile <37th percentile
SLTA		
Auditory word comprehension	10 <sup>a</sup>	=Mean*
Sentence comprehension	10	>Mean
Follow verbal commands	10	>Mean
Kana letter discrimination	10	=Mean
Object naming	20	>Mean
Word repetition	10	>Mean
Describe behaviors	10	>Mean
Explain picture story	6	>Mean
Sentence repetition	5	>Mean
Word fluency (listing)	7	<Mean – 1 standard deviation
Read aloud kanji words	5	=Mean
Read aloud kana words	10	=Mean
Read aloud kana letters	5	=Mean
Read aloud short sentences	5	>Mean
Kanji word-picture matching	10	>Mean
Kana word-picture matching	10	=Mean
Sentence picture matching	9	>Mean – 1 standard deviation <Mean
Follow written commands	10	>Mean
Write kanji words	5	>Mean
Write kana words	5	>Mean
Narrative writing	5	>Mean – 1 standard deviation <Mean
Dictate kana letters	10	>Mean
Dictate kanji words	5	>Mean
Dictate kana words	5	>Mean
Dictate short sentences	5	>Mean

MMSE, Mini-Mental State Examination; WAIS-R, Wechsler Adult Intelligence Scale-Revised; IQ, Intelligence quotient; WMS-R, Wechsler Memory Scale-Revised; SLTA, Standard Language Test for Aphasia.

<sup>a</sup>Raw score. <sup>b</sup>Scaled score. <sup>c</sup>Index score. \*Mean of 150 non-aphasics.

thus indicating dissociation between verbal and visual memory.

Her most outstanding behavioral trait was hyperlexia. She read words written on the cover of

a book or parts of information written on bulletin boards placed in front of her during interviews and test preparations. For example, when the examiner tried to conduct a test and showed her an evaluation

manual, she suddenly whispered, 'Wais Wais'. This is because she had responded to the words 'WAIS-R Intelligence Test for Adults, Japanese version' written on the title page of the evaluation manual. She was aware of her hyperlexia, saying, 'I try to avoid looking at anything with words because I read them aloud when I see them'.

Ambient echolalia, i.e., a tendency to repeat words emanating from unrelated conversations was also present. This phenomenon occurred when she heard conversations between other patients and therapists during therapy and parts of hospital announcements heard from loudspeakers, but she did not repeat any words of conversations or questions directed toward her. She did not express anguish while repeating any words, and she did not simply repeat words she had heard one after another. For instance, when she was asked, 'How long have you been hospitalized?', she answered, 'Since September 27', and added 'ICU' after a pause. This is because she had repeated a part of the hospital announcements heard through the speaker ('Family of Mr. or Ms. XX, please come to the ICU room').

## DISCUSSION

Our patient presented with a peculiar type of hyperlexia. She had a tendency to read words present in front of her and repeated words emanating from unrelated conversations around her. She was aware of the hyperlexia and tried to prevent it by avoiding looking at anything with words written on it. The callosal disconnection syndrome in this case was very similar to a case with apraxia (which may be caused by a mesial frontal lobe injury) and agraphia of the left arm described by Liepmann and Maas (1907) in which the callosal lesion would disconnect language from the right hemisphere while also disconnecting the left hemisphere motor engrams from the right hemisphere motor areas.

The compulsive manipulation of tools could be a mesial frontal form of alien hand sign, which was interpreted as faulty initiation, execution, and inhibition of preexisting essentially intact motor subroutines (Goldberg, Mayer, & Togli, 1981). This form of alien hand sign was postulated to be dissociation between will and action (Archibald, Mateer, & Kerns, 2001). The alien hand sign was often contrasted with utilization behavior (Lhermitte, 1983), which results from an imbalance

between proposed medial and lateral motor systems. In both conditions, patients perform actions elicited by objects in the environment even though these actions are inappropriate in the wider context. However, patients with alien hand sign report the actions as unintended and complain that the movement of their hand is out of their control, whereas patients with utilization behavior make no such complaint (Pacherie, 2007).

Her hyperlexia as well as the behavior of the right hand is an alien hand sign feature. These were unintended actions, and she complained that her speech was out of her control. Yamadori (2000) explained that the compulsive manipulation of tools and hyperlexia were both interpreted in terms of the rivalry between the top-down process of inhibition and bottom-up process of stimulus processing, resulting in the predominance of the latter. The process of hyperlexia in our case may therefore be identical to that of the right hand behavior.

Before the present report, acquired hyperlexia had only been previously described in a few cases in the literature (Assal, 1985; Furumoto et al., 1996; Hadano et al., 1987; Suzuki et al., 2000; Vuilleumier et al., 1997). The clinical features of six cases with acquired hyperlexia are summarized in Table 2. This phenomenon was caused by various diseases, however, the medial frontal lobe involvement including the anterior cingulate cortex seemed to be a common finding (4/6 cases). Aphasia occurred in 4/6 cases, all with impaired intelligence. Ambient echolalia was present in the case of dementia, as well as in our case. Behavioral disorders in either the manipulation or utilization of objects was frequent (4/6 cases).

Usually, the term hyperlexia is applied to children with developmental disorders, and it is characterized by superior word reading ability with deficits in comprehension and spontaneous speech. Nevertheless, there are cases of acquired hyperlexia absent from development and comprehension disorders. This indicates that the cause of 'acquired' hyperlexia is different from 'developmental' hyperlexia. A dysfunction of the frontal lobe (Furumoto et al., 1996) or the left supplementary motor area (Suzuki et al., 2000) is believed to be the cause of hyperlexia, but few reports have explained the detailed mechanism of acquired hyperlexia.

The lesion in our case was limited to the left anterior cingulate cortex and corpus callosum. The neuropsychological evaluation demonstrated the absence of dementia and aphasia. The clinical features were restricted to callosal disconnection

**TABLE 2**  
Clinical cases of acquired hyperlexia

<i>Author</i>	<i>Age</i>	<i>Sex</i>	<i>Diagnosis</i>	<i>Reported sites of lesions</i>	<i>Intelligence</i>	<i>Aphasia</i>	<i>Ambient echolalia</i>	<i>Other clinical features</i>
Present reported case	69	F	Cerebral infarction	L ACC L SFG L CC	WAIS-R VIQ 89 PIQ 82	–	+	Visual groping Compulsive manipulation of tools
Suzuki et al. (2000)	69	F	Post operative brain tumor	L ACC L SMA L CC	WAIS-R PIQ 61	Transcortical motor aphasia	–	Ideomotor apraxia
Vuilleumier et al. (1997)	65	M	Post-anoxic encephalopathy	–	Severe dementia	Anomia	–	Manual groping Compulsive sniffing Manipulation of tools Utilization of tools Utilization behavior
Furumoto et al. (1996)	66	F	Cerebral hemorrhage	L ACC L SFG L MFG L IFG L CC	MMSE 9	Transcortical sensory aphasia	–	
Hadano et al. (1987)	77	F	Dementia	–	Dementia	Mixed transcortical aphasia	+	Constructional apraxia
Assal (1985)	37	F	Cerebral infarction	B MFL R STG R MTG	WAIS-R VIQ 85 PIQ 90	–	–	Imitative behavior Utilization behavior

M, male; F, female; R, right; L, left; B, bilateral; +, present; –, absent; ACC, anterior cingulate cortex; SFG, superior frontal gyrus; CC, corpus callosum; SMA, supplementary motor area; MFG, middle frontal gyrus; IFG, inferior frontal gyrus; MFL, medial frontal lobe; STG, superior temporal gyrus; MTG, middle temporal gyrus; WAIS-R, Wechsler Adult Intelligence Scale-Revised; VIQ, verbal intelligence quotient; PIQ, performance intelligence quotient; MMSE, Mini-Mental State Examination.

syndrome and compulsive disorders such as compulsive manipulation of tools. Although the anterior cingulate cortex has prominent projections to motor systems, its contributions to human behavior have been elusive because isolated cingulate lesions are rare, and spontaneous lesions of the anterior cingulate cortex, such as those observed in tumors and strokes, almost always involve adjacent areas (Devinsky, Morrell, & Vogt, 1995). The supplementary motor area may contribute to the establishment of new motor programs and control the execution of established subroutines according to external and internal inputs. This could be the area where external inputs and commands are matched with internal needs and drives to enable the formulation of a strategy of voluntary movements (Larsen, Skinhøj, & Lassen, 1978). Hyperlexia as well as dissociative psychomotor disturbances, such as compulsive manipulation of tools, could be interpreted as a faulty inhibition of preexisting essentially intact motor subroutines by damage to the anterior cingulate cortex reciprocally interconnected with the supplementary motor area.

It was a remarkable and unusual finding that ambient echolalia was associated with hyperlexia in our case. A deterioration of speech (Hadano et al., 1987) or a lack of inhibition of the automatic repetition of verbal stimuli captured in the environment (Della Sala & Spinnler, 1998) was believed to cause ambient echolalia. Our patient repeated surrounding voices but did not repeat the utterances of persons with whom she was speaking. Usually, echolalia occurs in response to questions directed from a person facing the patient, who shows no interest toward auditory verbal stimuli that are completely 'neutral' to themselves. However, our case responded only to 'neutral' stimuli. The phenomenon observed in this case is believed to be an example of stimulus-bound behavior that may be associated with hyperlexia.

In conclusion, we herein described a case with cerebral infarction with a peculiar type of hyperlexia. Ambient echolalia was also present. The hyperlexia in our case could be interpreted as a faulty inhibition of preexisting essentially intact motor subroutines due to damage of the anterior

cingulate cortex, which was reciprocally interconnected with the supplementary motor area.

Original manuscript received 24 September 2008  
Revised manuscript accepted 3 February 2009  
First published online 6 July 2009

## REFERENCES

- Archibald, S. J., Mateer, C. A., & Kerns, K. A. (2001). Utilization behavior: Clinical manifestations and neurological mechanisms. *Neuropsychology Review*, 11, 117–130.
- Assal, G. (1985). Un aspect du comportement d'utilisation: la dépendance vis-à-vis du langage écrit. *Rev Neurology*, 141, 493–495.
- Della Sala, S., & Spinnler, H. (1998). Echolalia in a case of progressive supranuclear palsy. *Neurocase*, 4, 155–165.
- Devinsky, O., Morrell, M. J., & Vogt, B. A. (1995). Contributions of anterior cingulate cortex to behavior. *Brain*, 118, 279–306.
- Elliot, D. E., & Needleman, R. M. (1976). The syndrome of hyperlexia. *Brain and Language*, 3, 339–349.
- Endo, K., Suzuki, K., Yamadori, A., Kumabe, T., Seki, K., & Fujii, T. (2001). A case of crossed aphasia with echolalia after the resection of tumor in the right medial frontal lobe. *No To Shinkei*, 53, 287–292.
- Fisher, C. M. (1988). Neurologic fragments. I. Clinical observations in demented patients. *Neurology*, 38, 1868–1873.
- Furumoto, H., Matsuda, S., & Yoshiyama, Y. (1996). Transcortical sensory aphasia like symptoms following frontal lobe damage: The difference from that following posterior cerebral damage. *Shinkei Shinrigaku*, 12, 204–214.
- Goldberg, T. E. (1987). On hermetic reading abilities. *Journal of Autism and Developmental Disorders*, 17, 29–44.
- Goldberg, T. E., & Rothermel, R. D. (1984). Hyperlexic children reading. *Brain*, 107, 769–785.
- Goldberg, G., Mayer, N. H., & Togli, J. U. (1981). Medial frontal cortex infarction and the alien hand sign. *Archives of Neurology*, 38, 683–686.
- Hadano, K., Sakata, C., Tanaka, K., Hamanaka, T., & Toda, E. (1987). On a case of echolalia. *Seishin Igaku*, 29, 967–973.
- Huttenlocker, P. R., & Huttenlocker, J. (1973). A study of children with hyperlexia. *Neurology*, 23, 1107–1116.
- Larsen, B., Skinhøj, E., & Lassen, N. A. (1978). Variations in regional cortical blood flow in the right and left hemispheres during automatic speech. *Brain*, 101, 193–209.
- Lhermitte, F. (1983). Utilization behavior and its relation to lesions of the frontal lobes. *Brain*, 106, 237–255.
- Liepmann, H., & Maas, O. (1907). Fall von linksseitiger agraphie und apraxie bei rechtsseitiger lahmung. *Journal of Psychology and Neurology*, 10, 214–227.
- Mehegan, C. C., & Dreifuss, M. B. (1972). Hyperlexia: Exceptional reading ability in brain-damaged children. *Neurology*, 22, 1105–1112.
- Mori, E., & Yamadori, A. (1982). Compulsive manipulation of tools and pathological grasp phenomenon. *Rinsho Shinkeigaku*, 22, 329–335.
- Mori, E., Mitani, Y., & Yamadori, A. (1985). Usefulness of a Japanese Version of the Mini-Mental State test in neurological patients. *Shinkeishinrigaku*, 1, 82–90.
- Nirayama Conference (1975). *Standard language test for aphasia: Manual of directions*. Tokyo: Homeido.
- Pacherie, E. (2007). The anarchic hand syndrome and utilization behavior: A window onto agentive self-awareness. *Functional Neurology*, 22, 211–217.
- Seyffarth, H., & Denny-Brown, D. (1948). The grasp reflex and the instinctive grasp reaction. *Brain*, 71, 109–183.
- Shinagawa, F., Kobayashi, S., Fujita, K., & Maekawa, H. (1990). *Japanese Wechsler Adult Intelligence Scale-Revised*. Tokyo: Nihon Bunka Kagakusha.
- Silberberg, N. E., & Silberberg, M. C. (1967). Hyperlexia-specific word recognition skills in young children. *Exceptional Child*, 34, 41–42.
- Sugishita, M. (2001). *Japanese Wechsler Memory Scale-Revised*. Tokyo: Nihon Bunka Kagakusha.
- Suzuki, K., Yamadori, A., Kumabe, T., Endo, K., Fujii, T., & Yoshimoto, T. (2000). Hyperlexia in an adult patient with lesions in the left medial frontal lobe. *Rinsho Shinkeigaku*, 40, 393–397.
- Vuilleumier, P., Staub, F., & Assal, G. (1997). Sniffing behavior, or recognizing a lily by smell, but not recognizing a sock on sight. *Cortex*, 33, 571–577.
- Yamadori, A. (2000). A dynamic neuropsychological approach. *Rinsho Shinkeigaku*, 40, 1271–1273.