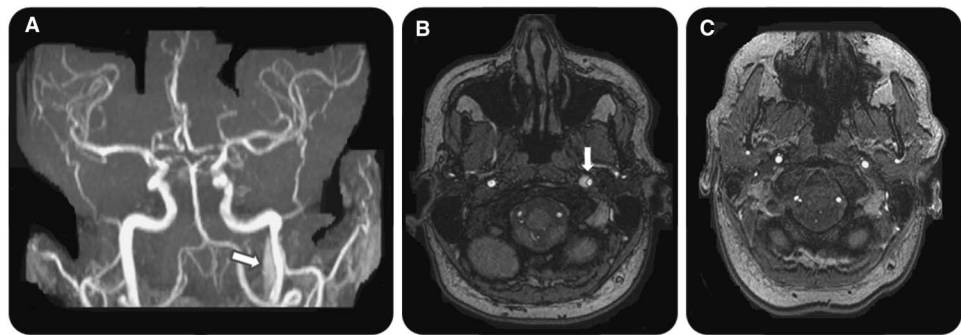


Carotid dissection following a generalized tonic-clonic seizure

Figure Imaging findings in a patient with left internal carotid dissection



Magnetic resonance angiogram (A) and axial postcontrast (B) show dissection in left carotid artery (arrows). (C) Axial post-contrast 1 month later shows recanalization.

A 37-year-old woman experienced a generalized tonic-clonic seizure. Subsequent to the seizure, the patient observed left-sided face and neck pain. A left Horner syndrome was noted on examination. An MRI and magnetic resonance angiogram revealed a left skull base carotid artery dissection without infarction (figure, A and B). Previous MRI had shown normal carotid flow voids. The patient was treated conservatively and magnetic resonance angiogram 1 month later revealed recanalization (figure, C).

Carotid artery dissection has an incidence of 1.72 per 100,000.¹ Although carotid artery dissection is reported in association with minor trauma, there are no reports occurring in association with a seizure.²

Nicholas D. Child, MBChB, Gregory D. Cascino, MD

From the Mayo Clinic, Rochester, MN.

Author contributions: Nicholas D. Child and Gregory D. Cascino contributed to drafting and revising the manuscript. Dr. Cascino was responsible for the study concept.

Study funding: No targeted funding reported.

Disclosure: N. Child reports no disclosures. G. Cascino serves as an Associate Editor for *Neurology*[®]. Go to Neurology.org for full disclosures.

Correspondence to Dr. Child: Child.Nicholas@mayo.edu

1. Lee VH, Brown RD, Mandrekar JN, Mokri B. Incidence and outcome of cervical artery dissection: a population-based study. *Neurology* 2006;67:1809–1812.
2. Debette S, Leys D. Cervical-artery dissections: predisposing factors, diagnosis, and outcome. *Lancet Neurol* 2009;8:668–678.