



Case Report

Transient dysautonomia in an acute phase of encephalopathy with biphasic seizures and late reduced diffusion

Yuko Ichimiya^{a,b}, Noriyuki Kaku^{a,b}, Yasunari Sakai^{a,*}, Fumiya Yamashita^a,
 Wakato Matsuoka^{a,b}, Mamoru Muraoka^{a,b}, Satoshi Akamine^a, Soichi Mizuguchi^{a,b},
 Michiko Torio^a, Yoshitomo Motomura^{a,b}, Yuichiro Hirata^{a,b}, Yoshito Ishizaki^a,
 Masafumi Sanefuji^a, Hiroyuki Torisu^{a,c}, Hidetoshi Takada^a, Yoshihiko Maehara^b,
 Shouichi Ohga^a

^a Department of Pediatrics, Graduate School of Medical Sciences, Kyushu University, Fukuoka, Japan

^b Emergency and Critical Care Center, Kyushu University, Fukuoka, Japan

^c Department of Pediatrics, Fukuoka Dental College Medical and Dental Hospital, Fukuoka, Japan

Received 28 November 2016; received in revised form 2 March 2017; accepted 17 March 2017

Abstract

Paroxysmal sympathetic hyperactivity (PSH) is a dysautonomic condition that is associated with various types of acquired brain injuries. Traumatic brain lesions have been documented as the leading cause of PSH. However, detailed clinical features of pediatric PSH caused by intrinsic brain lesions remain to be elusive. We present a 3-year-old boy, who had been diagnosed as having cerebral palsy, developmental delay and epilepsy after perinatal hypoxia-induced brain injury. He developed status epilepticus with fever on the third day of respiratory infection. Whereas the seizure was terminated by systemic infusion of midazolam, consciousness remained disturbed for the next 48 h. Serial magnetic resonance imaging studies revealed that acute encephalopathy with biphasic seizures and late reduced diffusion (AESD) evolved on 3 days after the seizure. Therapeutic hypothermia was immediately introduced, however, the brain lesion extended to the whole subcortical white matters on day 8. The intermittent bilateral dilation of pupils with increased blood pressure and tachycardia were observed until day 12. Real-time monitoring of electroencephalograms ruled out the recurrent attacks of seizures. The abnormal signs of autonomic nervous system gradually ceased and never relapsed after recovery from the hypothermia. PSH or a transient condition of dysautonomia may emerge and persist during the acute phase of AESD.

© 2017 The Japanese Society of Child Neurology. Published by Elsevier B.V. All rights reserved.

Keywords: Dysautonomia; Paroxysmal sympathetic hyperactivity (PSH); Therapeutic hypothermia; Acute encephalopathy with biphasic seizures and late reduced diffusion (AESD)

1. Introduction

Paroxysmal sympathetic hyperactivity (PSH) is a severe dysautonomic condition that is associated with acquired brain injuries. Diagnosis of PSH is made on increase in blood pressure, heart rate, respiratory rate, hyperthermia with diaphoresis, mydriasis, and dystonia

* Corresponding author at: Department of Pediatrics, Graduate School of Medical Sciences, Kyushu University, Fukuoka 812-8582, Japan. Fax: +81 92 642 5435.

E-mail address: ysakai22q13@gmail.com (Y. Sakai).

[1,2]. Traumatic brain injury is the leading cause of these dysautonomic symptoms, whereas detailed clinical features caused by intrinsic lesions, including acute encephalitis in childhood, remain to be determined [3].

Acute encephalopathy with biphasic seizures and late reduced diffusion (AESD) is the most common form of encephalopathy among Japanese children [4]. The diagnosis of AESD can be made on typical ‘bright-tree appearance’ with diffusion-weighted images, which usually arise in the subcortical white matter at 3–9 days of illness, and present unfavorable prognosis with severe neurological sequelae [4,5].

We herein report a case with severe AESD, who showed transient signs of dysautonomia during the therapeutic hypothermia. This study demonstrates that PSH or dysautonomic conditions may emerge in association with an excessive inflammatory condition of the brain in childhood.

2. Case presentation

The patient was a 3-year-old male. He was born to healthy, non-consanguineous parents at 41 weeks with 3,012 g of birth weight. Severe asphyxia was noted at birth with an Apgar score of 2 at 5 min. As a neurological sequela, he developed cerebral palsy and spastic quadriplegia. The developmental quotient was evaluated to be 45 at 18 months of age. He experienced the first attack of generalized convulsive seizure at 2 years and 4 months of age, and began to take valproic acid thereafter. He was brought to the emergency department of our hospital for right hemi-convulsions with a precedent episode of viral infection. The seizure was terminated by infusions of diazepam and midazolam, whereas his consciousness did not recover during the next 48 h (Fig. 1A).

Serial brain MRI scans started to show the bright-tree appearance at the left parieto-occipital region on the 3rd day, which extended to the whole subcortical regions by the 7th day (Fig. 1B). With an immediate diagnosis of AESD, methylprednisolone (30 mg/kg/day \times 3 days) and immunoglobulin (1 g/kg/day \times 2 days) were used. Therapeutic hypothermia at 34 °C was introduced with systemic infusions of midazolam (0.1 mg/kg/hour) and thiamylal (3.6 mg/kg/hour). On the 6th day, he started to show bilateral dilated pupils to 5.5 mm, which lasted intermittently for 1–2 h per each event. Coincidentally, heart rates were increased to 120–130 bpm, and the systolic/diastolic blood pressures fluctuated between 110/60 and 180/100 mmHg. These signs were repeatedly triggered by the stimulation of endotracheal suctioning, and recurred several times a day until the 12th day of admission. During therapeutic hypothermia, he was kept deeply sedated with thiamylal under the control of mechanical ventilation. Epileptiform discharges were absent in the real-time electroen-

cephalogram (EEG) monitoring even when these symptoms were present. Thus, epileptic seizures were unlikely to cause these symptoms. Serial studies on head computed tomography and blood tests further excluded the possibilities of elevated intracranial pressure, infection, and metabolic disorders. He was therefore diagnosed as having either PSH or a similar condition of dysautonomia. Rewarming from extended hypothermia started on day 17, and was completed without problems. His cardiac, respiratory conditions and autonomic functions fully improved, whereas severe brain dysfunctions were left as sequelae of acute encephalopathy. Because he is currently bed-ridden, surgical gastrostomy and tracheotomy is indicated for long-term home care.

3. Discussion

This is the first report demonstrating that autonomic dysfunctions should be considered as one of neurological complications in the acute phase of severe AESD. The diagnosis of PSH can be typically made with episodic increases in heart rate, systemic blood pressure, respiratory rate, temperature, sweating, muscle rigidity, motor activity and mydriasis [3,6]. Compared to these symptoms, our case showed only milder signs of PSH, lacking fever, tachypnea, sweating and muscle rigidity. Thus, the autonomic signs of the present case might be properly referred to as transient dysautonomia rather than as PSH. Nonetheless, we regarded his signs as those of PSH, considering the onset around the fifth day after the brain injury, repeated episodes 5 to 6 times a day with approximately 30 min of duration. We speculated that therapeutic hypothermia and sedatives contributed to modifying the symptoms and severity of PSH.

PSH is a common complication in severe traumatic brain injury [2]. Overall, 8–33% of cases with traumatic brain injuries were reported to show dysautonomic conditions including PSH, where the prevalence rates widely varied with damaged areas and sizes [6]. Recent reports have also shown that PSH may develop in association with non-traumatic brain lesions in childhood (Table S1). PSH or PSH-resembling dysautonomia was identified in 29–31% of cases with anoxic injury [7]. Children with encephalitis or meningoencephalitis have been also reported to trigger the onset of PSH although details in their clinical profiles remain to be clarified [3].

Earlier studies have proposed the two hypothetical models for the pathophysiology of PSH. First, brainstem excitatory centers might be released from the cortical and subcortical control. Second, excessive excitatory-inhibitory ratio at the brainstem and spinal cord levels may produce this condition [1,8]. Our report supports the former hypothesis because the present case showed broad inflammatory lesions in the cerebral cortex and subcortical white matter, but not in the

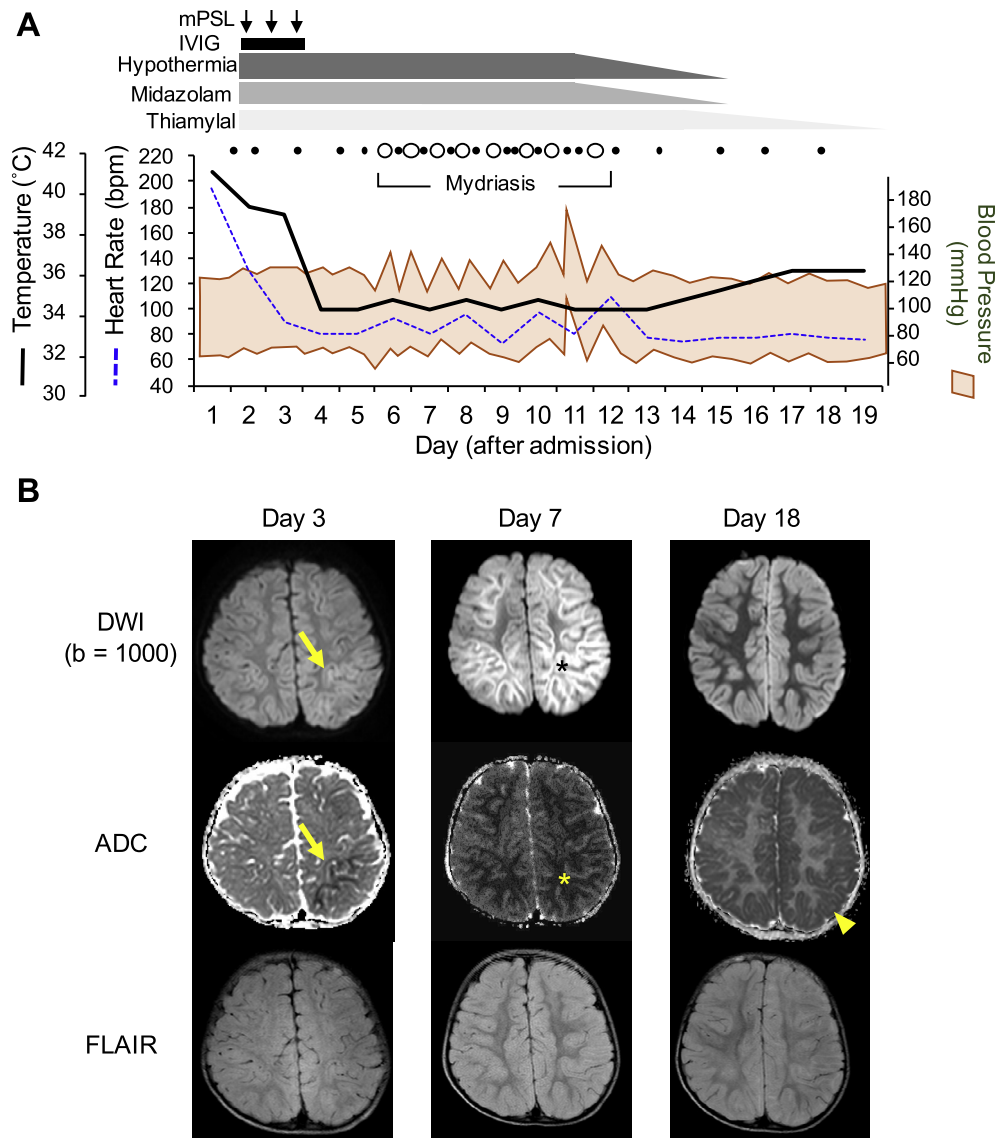


Fig. 1. Clinical signs of the present case during the intensive care (A) Treatments and medication are indicated at the top. Black and white dots represent the pupils in normal and enlarged sizes, respectively. “Mydriasis” indicates the duration of the sign with dilated pupils. Lower plots display body temperature (solid line), heart rates (dashed line), and blood pressures (orange shadowed area). (B) Panels show the axial views of magnetic resonance imaging (MRI) taken at indicated time points. Represented slices from diffusion-weighted images with b factor of 1,000 (DWI), apparent diffusion coefficient (ADC) map and fluid attenuated inversion recovery (FLAIR) are shown. Note that the left parieto-occipital signals with reduced diffusion on day 3 (arrows) extended to the massive subcortical white matter lesions on day 8 (asterisks). These subcortical lesions disappeared by day 18, and in turn, the whole cerebral cortex showed relatively low ADC values on day 18 (arrowhead).

brainstem or at lower levels. Although pathogenic mechanisms of AESD remain to be determined, several studies have suggested their close relationships with neuronal excitotoxicity after prolonged seizure [4]. Thus, excitotoxic neuronal loss may contribute to disconnecting the neural circuits between the cerebral cortex and brainstem during the acute phase of AESD.

It might be also valuable to investigate whether this case might have a unique genetic background that provoked AESD with remarkable signs of dysautonomia. In fact, some patients with AESD are known to carry Dravet syndrome-causing mutations in the *SCN1A* gene

[9]. Cardiogenic premature death has been pointed to as a comorbidity risk for children with Dravet syndrome than those in general population, and the etiology has been linked to their autonomic dysfunctions [10]. These data suggest that a certain proportion of AESD patients may have genetic variations that lead to a vulnerable condition of autonomic system under the stressed condition. Accumulating data with genome-wide analyses will help our understanding towards the overlapping mechanisms of acute encephalopathy with PSH or a transient condition of dysautonomia. Careful monitoring during the intensive care will be the key to recognize the

presence of this condition and to establish an optimal treatment for severe AESD.

4. Consent to publish

Informed consent was obtained from the patients' parents for publication of this case report.

Conflict of interest

All authors have no conflicts of interest to be disclosed.

Acknowledgment

We thank Drs. Ryutaro Kira and Sooyoung Lee at Fukuoka Children's Hospital for helpful discussion. This work was supported by JSPS KAKENHI No. 15K09624 (Y.S.), 16K09991 (M.S.), 26860848 (M.T.), 26461547 (Y.I.), Evidence-based early diagnosis and treatment strategies for neuroimmunological diseases from the Ministry of Health, Labour and Welfare of Japan (Y.S.), and The Japan Epilepsy Research Foundation (Y.S.).

Appendix A. Supplementary data

Supplementary data associated with this article can be found, in the online version, at <http://dx.doi.org/10.1016/j.braindev.2017.03.023>.

References

- [1] Baguley IJ, Heriseanu RE, Cameron ID, Nott MT, Slewa-Younan S. A critical review of the pathophysiology of dysautonomia following traumatic brain injury. *Neurocrit Care* 2008;8:293–300.
- [2] Perkes I, Baguley IJ, Nott MT, Menon DK. A review of paroxysmal sympathetic hyperactivity after acquired brain injury. *Ann Neurol* 2010;68:126–35.
- [3] Farias-Moeller R, Carpenter JL, Dean N, Wells EM. Paroxysmal sympathetic hyperactivity in critically ill children with encephalitis and meningoencephalitis. *Neurocrit Care* 2015;23:380–5.
- [4] Takanashi J, Oba H, Barkovich AJ, Tada H, Tanabe Y, Yamanouchi H, et al. Diffusion MRI abnormalities after prolonged febrile seizures with encephalopathy. *Neurology* 2006;66:1304–9.
- [5] Lee S, Sanefuji M, Torio M, Kaku N, Ichimiya Y, Mizuguchi S, et al. Involuntary movements and coma as the prognostic marker for acute encephalopathy with biphasic seizures and late reduced diffusion. *J Neurol Sci* 2016;370:39–43.
- [6] Perkes IE, Menon DK, Nott MT, Baguley IJ. Paroxysmal sympathetic hyperactivity after acquired brain injury: a review of diagnostic criteria. *Brain Inj* 2011;25:925–32.
- [7] Kirk KA, Shoykhet M, Jeong JH, Tyler-Kabara EC, Henderson MJ, Bell MJ, et al. Dysautonomia after pediatric brain injury. *Dev Med Child Neurol* 2012;54:759–64.
- [8] Baguley IJ. The excitatory:inhibitory ratio model (EIR model): An integrative explanation of acute autonomic overactivity syndromes. *Med Hypotheses* 2008;70:26–35.
- [9] Saitoh M, Ishii A, Ihara Y, Hoshino A, Terashima H, Kubota M, et al. Missense mutations in sodium channel SCN1A and SCN2A predispose children to encephalopathy with severe febrile seizures. *Epilepsy Res* 2015;117:1–6.
- [10] Delogu AB, Spinelli A, Battaglia D, Dravet C, De Nisco A, Saracino A, et al. Electrical and autonomic cardiac function in patients with Dravet syndrome. *Epilepsia* 2011;52(Suppl. 2):55–8.