

Fig. 3. (A) Subsequent Axial 2D time-of-flight MRA, demonstrated persistent medial displacement and rotation of the ICA (arrow) with the head in a neutral position. (B) MRI: Axial T1-weighted imaging, head turned to the right, demonstrated restoration of the normal anatomic position of the ICA (arrow).

able considering the minimal morbidity and allows the patient physical and psychological freedom with neck movement.

4. Conclusion

Hyoid bone impingement of the carotid artery should be considered in stroke of indeterminate aetiology especially in the presence of neck, throat, ear pain, repetitive neck movements and prolonged neck position. CTA neck with head rotation may be used for initial screening.

Appendix A. Supplementary data

Supplementary data to this article can be found online at <https://doi.org/10.1016/j.jocn.2019.03.040>.

<https://doi.org/10.1016/j.jocn.2019.03.040>

References

- [1] Hart RG, Catanese L, Perera KS, et al. Embolic Stroke of Underdetermined Source: A systematic review and clinical update. *Stroke* 2017;48(4):867–72.
- [2] Mirjalili SA, McFadden SL, Buckenham T, et al. Vertebral levels of key landmarks in the neck. *Clin Anat* 2012;25(7):851–7.
- [3] Lee W. General principles of carotid Doppler ultrasonography. *Ultrasonography* 2014;33(1):11–7.
- [4] Ludt C, Leppert M, Jones A, et al. Multiple strokes associated with elongation of the hyoid bone. *Neurohospitalist* 2018;8(1):35–7.
- [5] Renard D, Rougier M, Aichoun I, et al. Hyoid bone-related focal carotid vasculopathy. *J Neurol* 2011;258:1540–1.
- [6] Renard D, Freitag C. Hyoid-related internal carotid artery dissection. *J Neurol* 2012;259:2501–2.
- [7] Kinoshita N, Saito K, Yamaguchi Y, et al. Flip-flop phenomenon: swallowing-induced arterial displacement as an indicator of carotid artery disease. *Cerebrovasc Dis* 2018;45(5–6):258–62.
- [8] Robinson PJ, Davis JP, Fraser JG. The hyoid syndrome: a pain in the neck. *J Laryngol Otol* 1994;108:855–8.

Mirror writing after perimesencephalic subarachnoid haemorrhage

Benjamin Fleming^{a,*}, Alexios A. Adamides^{a,b}

^a Department of Neurosurgery, The Royal Melbourne Hospital, Parkville, Victoria, Australia

^b Department of Surgery, University of Melbourne, Victoria, Australia



ARTICLE INFO

Article history:

Received 13 March 2019

Accepted 21 March 2019

Keywords:

Mirror-writing

Mirror writing

Perimesencephalic subarachnoid hemorrhage

Non-aneurysmal subarachnoid hemorrhage

Delayed ischemic neurological deficit

Hyponatremia

ABSTRACT

We report a case of a right-handed Caucasian woman who developed mirror writing following a non-aneurysmal, non-traumatic subarachnoid haemorrhage. The patient was unaware of having this phenomenon, and it was detected by clinical staff when the patient was writing a card to a family member. Serial imaging has ruled out a stroke as well as an underlying vascular abnormality. This phenomenon resolved after two months. Whilst there is a body of literature surrounding mirror writing, to our knowledge, this is the first description of mirror writing in the setting of a perimesencephalic subarachnoid haemorrhage.

Crown Copyright © 2019 Published by Elsevier Ltd. All rights reserved.

* Corresponding author at: Department of Neurosurgery, The Royal Melbourne Hospital, 300 Grattan Street, Parkville, Victoria 3050, Australia.

E-mail address: Benjamin.fleming@mh.org.au (B. Fleming).

1. Case summary

A 59-year-old right-handed Caucasian woman presented with sudden onset, severe, thunderclap headache and vomiting. Computer tomography (CT) of the head revealed moderate volume subarachnoid blood within the interpeduncular, ambient, prepontine, and medullary cisterns, extending into the suprasellar cistern and proximal left sylvian fissure, and a small haematoma within the foramen of Magendie (Fig. 1).

At the time of admission, she had a Glasgow Coma Scale (GCS) score of 14/15, with eye-opening to voice, but no neurological deficit. The patient was an active smoker, and had a known history of treated breast cancer. There was no history of trauma. She had completed high school education and worked as a counsellor.

Blood pressure remained well controlled throughout her admission, and she never exhibited weakness or sensory disturbance. CT angiogram as well as Digital Subtraction Angiogram (DSA), performed on the day of admission did not show an aneurysm or other vascular lesion. On day 3 of admission, she developed Syndrome of inappropriate ADH release (SIADH), with a sodium nadir of 120 mmol/L. This was managed with hypertonic saline, improving to 127 mmol/L over 24 h and 135 mmol/L at another 48 h.

MRI/MRA of the brain and cervical spine on day 3 showed a small focal acute infarct within the right occipital subcortical white matter but no evidence of vasospasm or underlying vascular lesion. An MRI/A brain performed one week later demonstrated incidental focal narrowing of the right P1 segment, likely due to vasospasm. The previous focal occipital infarct was not visible.

During her admission, she had regular occupational therapy reviews, scoring 12/30 on the Montreal Cognitive Assessment tool (Fig. 2). Major deficits were visuospatial, memory, language and orientation, with numbers on the clock-face task running in an anticlockwise order but the numbers not being mirrored. On day 12 of admission, she was noted to have more pervasive mirror writing when writing a card (Fig. 3). A brain CT angiogram demonstrated basilar as well as bilateral P1 segment narrowing.

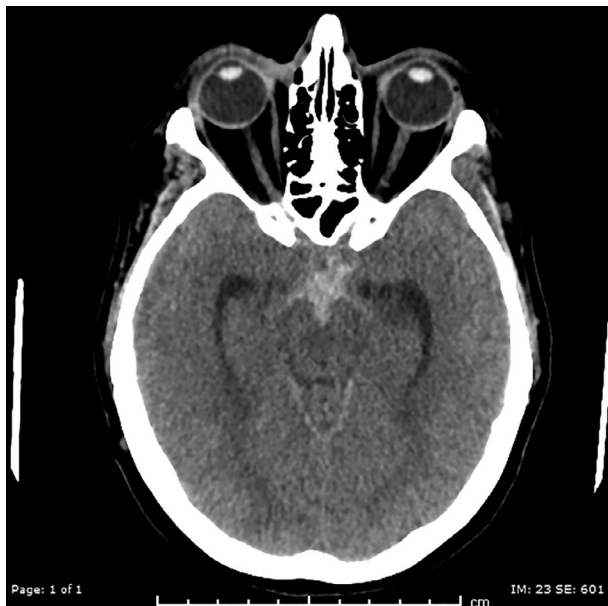


Fig. 1. CT brain on the day of admission, demonstrating subarachnoid blood within the basal cisterns.

Serial imaging since her hospital discharge remains unremarkable. Over the following two months, she became increasingly aware of her mirror writing, and it resolved.

2. Discussion

Mirror writing is an unusual script, in which text runs in the opposite direction to normal and with letters reversed [1,2]. When held to a mirror, such words can be read normally. The phenomenon itself is highly heterogeneous, with writing ranging from a single reversed letter, through numerous reversed letters but not words, to occasional mirrored words, and even complete pages of script [2]. Numerals and visual engrams may also be reversed too.

In otherwise healthy individuals, the phenomenon is seen, for example, in children who are learning to write, as well as in right-handed adults when they are required to write with their unaccustomed hand [3]. It is almost always undertaken with the left hand [2], with left-handed individuals and those whose languages are written leftwards, such as Japanese, Chinese, Hebrew and Arabic, tending to exhibit more this phenomenon [2,3].

Pathological mirror writing is mostly commonly seen in the setting of stroke. However, even then, the incidence is low, with reports varying between 2.5 and 13 percent, and almost invariably involves damage to the left hemisphere. Other circumstances in which mirror writing can manifest is in focal or diffuse brain trauma, and degenerative brain diseases such as Parkinson's disease and spinocerebellar degeneration [2,4]. Given the variety of conditions in which this phenomenon can manifest, it is clear that there is no single structure involved. Indeed, mirror writing has been reported in patients with isolated lesions involving, right supplementary motor area, medial prefrontal cortex, anterior cingulate gyrus, left basal ganglia and left parietal lobe [2,5–11].

Multiple theories exist regarding why mirror writing can develop, ranging from motor centre, spatial-orientation, visual, and thalamo-cortical circuitry hypotheses [6,12]. However, the unifying feature of these is that mirror writing is almost always carried out with the left hand, and is often associated with other, more pervasive phenomena, such as mirrored reading, right-left perceptual difficulties, and dyslexia [6,12]. Our case is unique in that our patient exhibited mirror writing with the right hand, and without other features such as mirrored reading or mirrored engrams.

Whilst our patient did exhibit a delayed ability to differentiate left from right, overall, she was correct in her responses such as naming various left- and right-sided body parts. The most notable example of her left right disorientation was during her completion of the clock-face drawing task on the Montreal Cognitive Assessment tool, whereby numbers were ordered in an anticlockwise direction but the numbers themselves were not mirrored. She was still able to copy a cube in the conventional fashion. It is difficult to determine whether other objects she drew were mirrored, as those witnessed, such as hearts and crosses, have lines of symmetry. The patient also was able to read in the conventional Western fashion. She also exhibited anosognosia and anosodiaphoria regarding her writing. However, interestingly, over two months, her mirrored writing became less frequent as she became increasingly aware of and concerned by this trait.

Both the cause of her subarachnoid haemorrhage and mirrored writing remains uncertain. However, the radiology findings of basilar artery and proximal P1 segment narrowing, concerning for vasospasm, could suggest that the patient's mirror writing was due to cerebral ischaemia. Interestingly, the patient developed profound hyponatraemia early during her admission (day 3). Several studies have demonstrated an association between hyponatraemia

04/17/18

MONTREAL COGNITIVE ASSESSMENT (MOCA)

Version 7.1 Original Version

VISUOSPATIAL / EXECUTIVE

End
Begin

[X]

Co
cube

[X]

[X]

1/5

NAMING

"Tiger" [X]

[X]

[X]

2/3

MEMORY	Read list of words, subject must repeat them. Do 2 trials, even if 1st trial is successful. Do a recall after 5 minutes.						
	FACE	VELVET	CHURCH	DAISY	RED		
1st trial	[X]	[X]	[X]	[X]	[X]	No points	
2nd trial	[X]	[X]	[X]	[X]	[X]		

ATTENTION

Read list of digits (1 digit/sec.). Subject has to repeat them in the forward order [X] 2 1 8 5 4
Subject has to repeat them in the backward order [X] 7 4 2

new list of letters. The subject must tap with his hand at each letter A. No points if ≥ 2 errors [X] FBACMNAAJKLBAFAKDEAAAAJAMOF AAB

Serial 7 subtraction starting at 100 [X] 93 [X] 86 [X] 79 [X] 72 [X] 65

4 or 5 correct subtractions: 3 pts. 2 or 3 correct: 2 pts. 1 correct: 1 pt. 0 correct: 0 pt

3/3

LANGUAGE

Repeat: I only know that John is the one to help today. [X]
The cat always hid under the couch when dogs were in the room. [X]

Fluency / Name maximum number of words in one minute that begin with the letter F [X] 2 (N ≥ 11 words)

1/2

ABSTRACTION

Similarity between e.g. banana - orange = fruit [X] train - bicycle [X] watch - ruler

2/2

DELAYED RECALL

	FACE	VELVET	CHURCH	DAISY	RED	Points for UNCUE recall only
Has to recall words WITH NO CUE	[X]	[X]	[X]	[X]	[X]	
Category cue	[X]	[X]	[X]	[X]	[X]	
Multiple choice cue	[X]	[X]	[X]	[X]	[X]	

1/5

Optional

ORIENTATION

[X] Date [X] Month [X] Year [X] Day [X] Place [X] City

1/6

© Z.Nasreddine MD www.mocatest.org Normal ≥ 26 / 30

Administered by: [Signature] 04/17/18

TOTAL 12/30
Add 1 point if ≤ 12 yr edu

Fig. 2. Our patient's Montreal Cognitive Assessment (MOCA), demonstrating deficits across multiple cognitive domains.

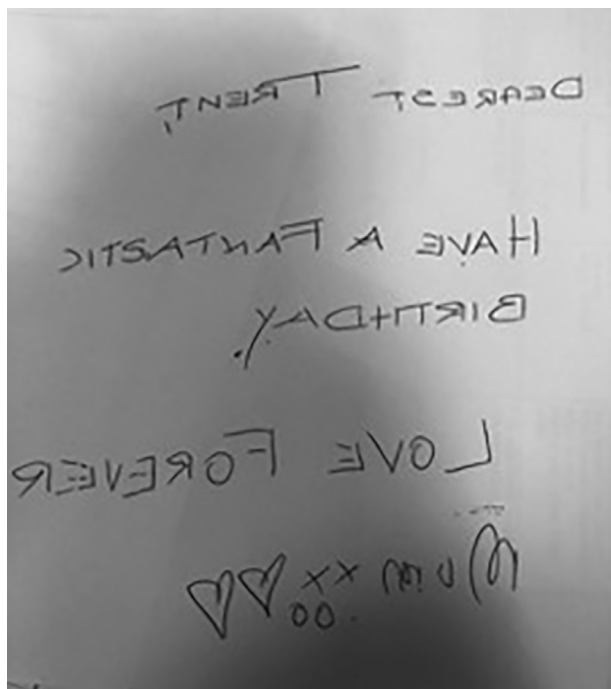


Fig. 3. A handwritten card from the patient, noted on day 12 of admission.

and delayed ischaemic neurological deficits, which can include features as subtle as mental state changes [13–17].

This case outlines an interesting, rare and transient phenomenon in a right-handed patient after a perimesencephalic subarachnoid haemorrhage. To our knowledge this is the first reported such case in the literature.

Disclosure

This report did not receive any specific grant from funding agencies in the public, commercial, or not-for-profit sectors. The authors have no conflicts of interest to disclose.

Sources of support

This report did not receive any funding from funding agencies in the public, commercial, or not-for-profit sectors.

Declarations of interest

None.

Appendix A. Supplementary data

Supplementary data to this article can be found online at <https://doi.org/10.1016/j.jocn.2019.03.039>.

References

- [1] McBride P. Mirror-Writing. By Critchley MacDonald, M.D., M.R.C.P. (Psyche Miniatures.) 1928. London: Kegan Paul. Price 2s. 6d. J Laryngol Otol 1928;43:908–9.
- [2] Schott GD. Mirror writing: neurological reflections on an unusual phenomenon. J Neurol Neurosurg Psychiatry 2007;78:5–13.
- [3] McIntosh RD, Della Sala S. Mirror-writing. Psychologist 2012;25:742–6.
- [4] Tashiro K, Matsumoto A, Hamada T, Moriwaka F. The aetiology of mirror writing: a new hypothesis. J Neurol Neurosurg Psychiatry 1987;50:1572–8.
- [5] Chan JL, Ross ED. Left-handed mirror writing following right anterior cerebral artery infarction: evidence for nonmirror transformation of motor programs by right supplementary motor area. Neurology 1988;38:59–63.
- [6] Gottfried JA, Sancar F, Chatterjee A. Acquired mirror writing and reading: evidence for reflected graphemic representations. Neuropsychologia 2003;41:96–107.
- [7] Chia LG, Kinsbourne M. Mirror-writing and reversed repetition of digits in a right-handed patient with left basal ganglia haematoma. J Neurol Neurosurg Psychiatry 1987;50:786–8.
- [8] Lambon-ralph MA, Jarvis C, Ellis AW. Life in a mirrored world: report of a case showing mirror reversal in reading and writing and for non-verbal materials. Neurocase 1997;3:249–58.
- [9] Wang XD. Mirror writing of Chinese characters in children and neurologic patients. Chin Med J 1992;105:306–11.
- [10] Fildes LG. Experiments on the problem of mirror-writing. Br J Psychol Gen Sect 1923;14:57–67.
- [11] Rodríguez R, Aguilar M, González G. Left non-dominant hand mirror writing. Brain Lang 1989;37:122–44.
- [12] Schott GD, Schott JM. Mirror writing, left-handedness, and leftward scripts. Arch Neurol 2004;61:1849–51.
- [13] Fernandez SJ, Barakat I, Ziogas J, Frugier T, Stylli SS, Laidlaw JD, et al. Association of copeptin, a surrogate marker of arginine vasopressin, with cerebral vasospasm and delayed ischemic neurologic deficit after aneurysmal subarachnoid hemorrhage. J Neurosurg 2018:1–7.
- [14] Chandy D, Sy R, Aronow WS, Lee W-N, Maguire G, Murali R. Hyponatremia and cerebrovascular spasm in aneurysmal subarachnoid hemorrhage. Neurol India 2006;54:273–5.
- [15] Morinaga K, Hayashi S, Matsumoto Y, Omiya N, Mikami J, Ueda M, et al. Hyponatremia and cerebral vasospasm in patients with aneurysmal subarachnoid hemorrhage. No To Shinkei 1992;44:629–32.
- [16] Zheng B, Qiu Y, Jin H, Wang L, Chen X, Shi C, et al. A predictive value of hyponatremia for poor outcome and cerebral infarction in high-grade aneurysmal subarachnoid haemorrhage patients. J Neurol Neurosurg Psychiatry 2011;82:213–7.
- [17] Vrsajkov V, Javanović G, Stanisavljević S, Uvelin A, Vrsajkov JP. Clinical and predictive significance of hyponatremia after aneurysmal subarachnoid hemorrhage. Balkan Med J 2012;29:243–6.

<https://doi.org/10.1016/j.jocn.2019.03.039>