

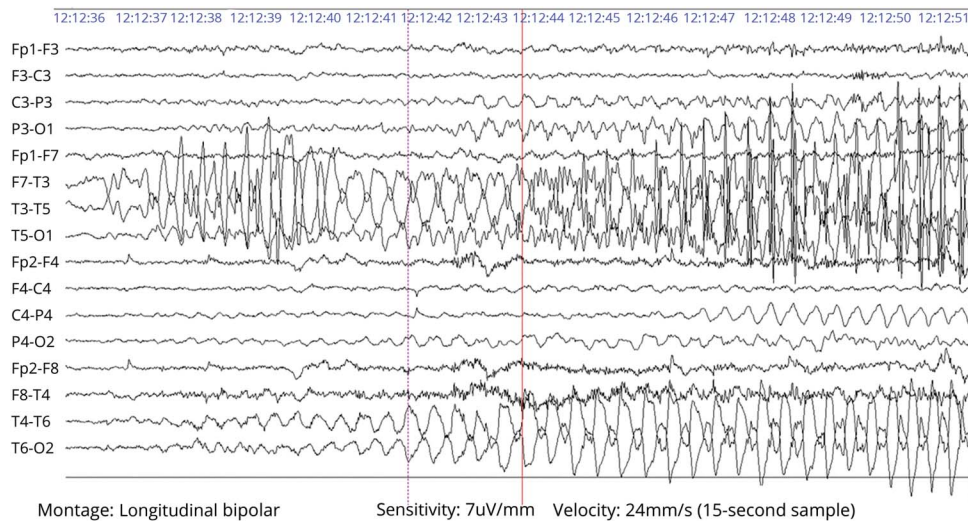
# Proprioceptive-induced (stimulus-sensitive) reflex seizures

Gustavo Fernandes, MD, MSc, Gerado Rizzo, MD, Luiz Nelson Fernandes, MD, MSc, and Brendon Popinhak, MD

*Neurology*® 2020;94:89-90. doi:10.1212/WNL.00000000000008791

**Correspondence**  
Dr. Fernandes  
gcostafernandes@  
yahoo.com

**Figure** EEG shows epileptiform discharges in the left frontotemporal region during voluntary movement of the right lower limb



A 78-year-old man presented with abnormal right leg movements 2 days after mild traumatic brain injury. He displayed clonic movements of the right leg after a few seconds of voluntary movement of the same leg, lasting about 20 seconds. Brain MRI showed a small subarachnoid hemorrhage in the cerebral convexities. EEG at rest was normal but demonstrated robust epileptiform discharges in the left frontotemporal region (figure) after voluntary movements of the right leg (video 1). Seizures subsided with clobazam 20 mg/d. Reflex seizures have been described with various triggers and etiologies.<sup>1,2</sup>

## Author contributions

G.C. Fernandes: drafting/revising the manuscript, study concept or design, accepts responsibility for conduct of research and final approval, acquisition of data. G. Rizzo: analysis or interpretation of data, accepts responsibility for conduct of research and final approval, acquisition of data. L.N. Fernandes: drafting/revising the manuscript, accepts responsibility for conduct of research and final approval, diagnosis formulation. B. Popinhak: drafting/revising the manuscript, accepts responsibility for conduct of research and final approval, acquisition of data.

**MORE ONLINE**

▶ **Video**

From the Department of Neurology (G.F., G.R., B.P.), Hospital Moinhos de Vento; and Department of Neurology (L.N.F.), Federal University of Rio Grande do Sul, Porto Alegre, Brazil. Go to [Neurology.org/N](https://www.neurology.org/N) for full disclosures. Funding information and disclosures deemed relevant by the authors, if any, are provided at the end of the article.

## Study funding

No targeted funding reported.

## Disclosure

The authors report no disclosures relevant to the manuscript.  
Go to [Neurology.org/N](https://www.neurology.org/N) for full disclosures.

## References

1. Szűcs A, Rosdy B, Kelemen A, Horvath A, Halasz P. Reflex seizure triggering: learning about seizure producing systems. *Seizure* 2019;69:25–30.
2. Wolf P. Reflex epileptic mechanisms in humans: lessons about natural ictogenesis. *Epilepsy Behav* 2017;71:118–123.

---

## Sign Up for the AAN's Axon Registry

The AAN encourages its US members to show their interest in participating in the Axon Registry® by signing up today.

Use the Axon Registry to:

- Simplify reporting requirements under MACRA's Quality Payment Program and avoid penalties while reducing your administrative burden
- Meet your MOC Part IV requirements and waive up to eight credits of Part II Self-Assessment
- Choose from 22 AAN neurology-specific quality measures that fit your practice
- Use data to understand your practice and identify where improvements can be made to patient care
- Manage your patients at a population level; look at a specific group of patients based on conditions, risk factors, demographics or outcome
- Demonstrate your value to payers when negotiating reimbursement
- Enjoy multi-year, fee-free access when you sign the agreements and integrate your EHR with the registry

Learn more at [AAN.com/view/Axon](https://www.aan.com/view/Axon) and send your questions to [registry@aan.com](mailto:registry@aan.com).

---



## Without Borders – A curated collection featuring advances in global neurology

This *Neurology*® special interest website is the go-to source for tracking science and politics of neurology beyond the United States, featuring up-to-the-minute blogs, scholarly perspectives, and academic review of developments and research from *Neurology* journals and other sources. Curated by Gretchen L. Birbeck, MD, MPH.

Expand your world view at [Neurology.org/woborders](https://www.neurology.org/woborders).

---